



CHRISTCHURCH ARTS FESTIVAL

**22 AUGUST –
22 SEPTEMBER
2013**



**REBUILDING
THE HEART**
HIKITIA TE
MANAWA



**FIVE
AMAZING
FESTIVAL
WEEKENDS**



FESTIVAL PARTNERS

CORNERSTONE PARTNERS



INFRASTRUCTURE PARTNERS



STRATEGIC PARTNERS



MEDIA PARTNERS



CORPORATE PARTNERS



SUPPORTING PARTNERS



WITH SUPPORT FROM

ADRIENNE, LADY STEWART
FARINA THOMPSON CHARITABLE TRUST
FESTIVAL PATRONS AND FRIENDS
FOODSTUFFS COMMUNITY TRUST
ROBERT AND BARBARA STEWART TRUST

FESTIVAL PARTNERS

BDO
CAMELOT MOTOR LODGE
CHRIST'S COLLEGE
CHRISTCHURCH ART GALLERY
CHRISTCHURCH POLYTECHNIC INSTITUTE OF TECHNOLOGY (CPIT)
ERNST AND YOUNG
GREENWOOD ROCHE CHISNALL
MCCARTHY DESIGN
MONTEITHS
MURRAY & CO
NV INTERACTIVE
THE GEORGE
WHITEBAIT TV

ENJOY FIVE FESTIVAL WEEKENDS

The Festival this year is spread over five weekends and three main venues. Larger-scale shows are held at the Aurora Centre, Memorial Avenue. Theatre and some music will feature at the Rudolf Steiner School, Opawa.

The main music programme and Ideas Festival will be held at the Fletcher Building Festival Club, Market Square, The Arts Centre (facing on to Worcester Boulevard). We've kept our prices low, some events are free, some for adults and some for family.

Come and celebrate the best of Christchurch, the best of New Zealand and the best international shows we could bring.



Photo: Ng Pae o te Mramatanga

SIR TIPENE O'REGAN
Honorary Festival Patron

Nāia te mihi kau
atu a Ngāi Tahu,
Nāia te uruhau a
Aoraki e pāorooro ana.

Ko tātou te ia kawe
hāora, ko tātou te ia
kawe toto

Ki tēnei te manawa
o Ōtautahi

E pātukituki nei,
e whetukituki nei

Hai oranga tonutanga
mō tātou.

Greetings and
salutations to you all

From the people of
Ngāi Tahu and our ancestral
mountain, Aoraki.

The people are the soul,
the essence, we are resilient

That which makes the heart
of Christchurch beat.

BOB PARKER
Honorary Festival Patron

A major arts festival is a
significant feature on the
cultural landscape of any city.
As we survey our city and look
keenly towards the future, we
can take heart that an event like
the Christchurch Arts Festival
continues to bolster spirits and
inject vitality and enthusiasm.

Planning and rebuilding this
city and ensuring our buildings
and physical infrastructure are
second to none is a key focus for
many. Equally important is the
restoration of the infrastructure
that nurtures and sustains the
heart of our city and makes
Christchurch a great place to
live. The Festival and the power
of live performance play key
roles in this essential task.

You can be mightily impressed
at the wide-ranging and top
quality programme being rolled
out over five weekends. There
are stunning live performances
for all ages and all interests.
I urge you to take part. Enjoy
your festival. Enjoy your city.

**CLARE MURRAY /
LAUREN SEMPLE**
Co-Chairs

PHILIP TREMEWAN
Festival Director

We are delighted to bring you
this year's festival, spanning five
exciting weekends filled with
shows and activities to pull you
out of winter and reinvigorate
the senses for spring!

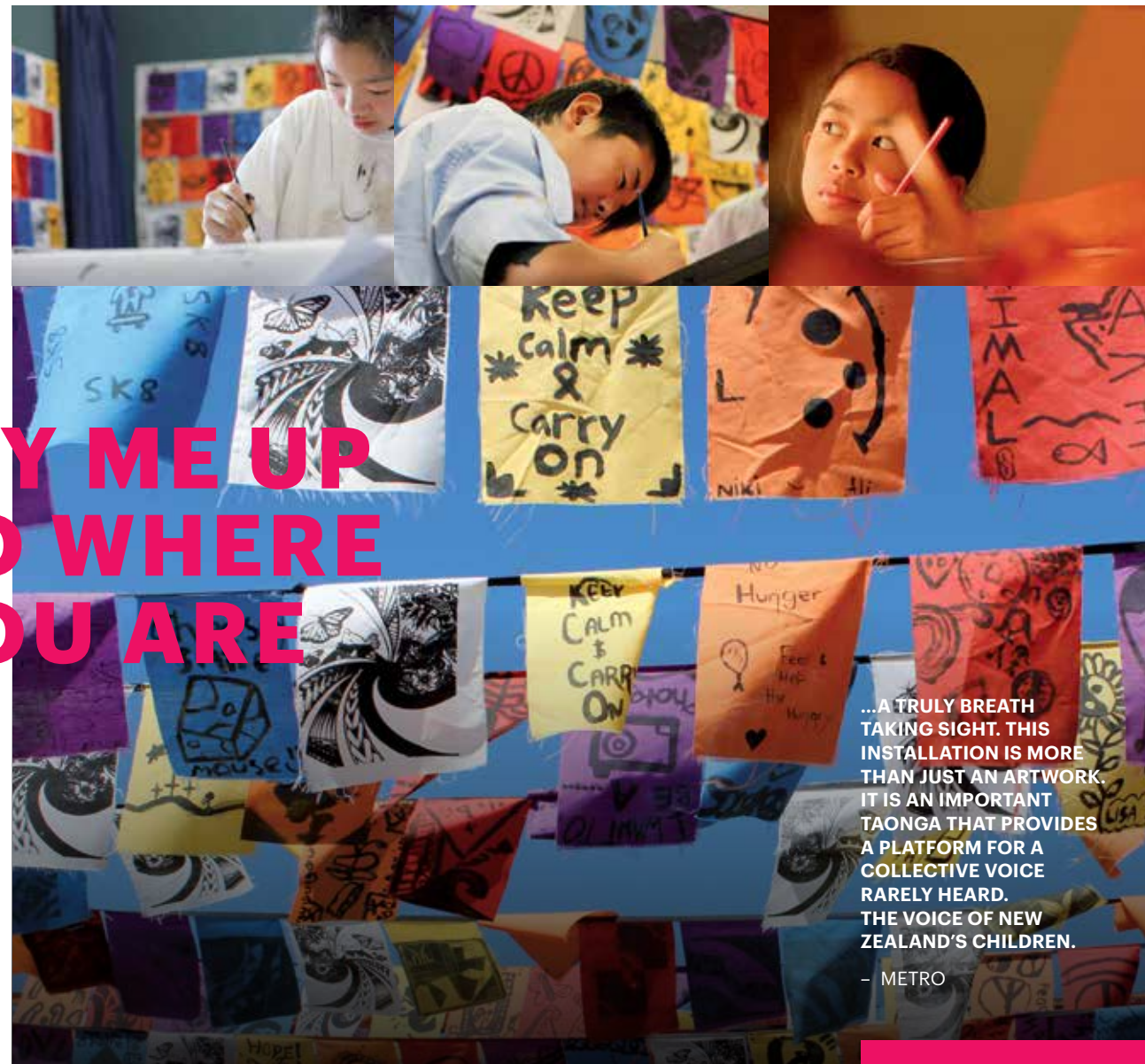
Kick up your heels, move to
music, be astonished by circus
and cabaret performers, and
enjoy quality theatre. It's all on
show for you in a burst of energy
and vitality to amuse, enliven
and invigorate.

Make the festival part of your
year and bring Christchurch
alive! We have kept our prices
as low as possible so you can
come to a different show every
weekend with your friends and
family.

Enjoy!

FLY ME UP TO WHERE YOU ARE

Photo: Robert George



...A TRULY BREATH
TAKING SIGHT. THIS
INSTALLATION IS MORE
THAN JUST AN ARTWORK.
IT IS AN IMPORTANT
TAONGA THAT PROVIDES
A PLATFORM FOR A
COLLECTIVE VOICE
RARELY HEARD.
THE VOICE OF NEW
ZEALAND'S CHILDREN.

— METRO

TIFFANY SINGH / NEW ZEALAND

Fly Me Up To Where You Are begins with Christchurch's children and culminates in the heart of our city in a riot of colour.

Artist Tiffany Singh explores the power of art to build a community. Inspired by the Tibetan tradition of prayer flags, *Fly Me Up To Where You Are* gathers the hopes and dreams of thousands of Christchurch's children in the form of hand-painted dream flags created in workshops with the artist.

The flags unite in a stunning public installation, transforming part of the central city with a mass of joyous colour. In this very special project, each child will create a flag expressing their personal hopes and dreams and a flag expressing their hopes and dreams for the city of Christchurch.

Come, with family and friends, and contemplate under this canopy of dreams, made by the children of Christchurch.

Commissioned by Auckland Arts Festival and premiered at Auckland Arts Festival 2013.

WHEN:
THURS 22 AUG – SUN 22 SEP

WHERE:
WORCESTER BOULEVARD, ENTRANCE
TO CHRISTCHURCH CITY COUNCIL

Supported by



**CHRISTCHURCH
ART GALLERY
TE PUNA O
WAIWHETU**



THX 4 THE MEMORIES

Photo: Bridgit Anderson



PLACE IN TIME / CHRISTCHURCH

As the devastating series of earthquakes in Christchurch continued, residents in a large part of the eastern suburbs began to hear the words "Red Zone" and as the Government decreed that numerous homes in suburbs across the city were to totally disappear, the lives of thousands of people were suddenly and irrevocably changed.

This large-scale outdoors exhibition by Place In Time, the Christchurch documentary project, records stories and images from one such place, the suburb of Avonside and testifies to their resilience and to the very human strength of their stories.

*Photographs by Bridgit Anderson and Tim J. Veling.
Text by Glenn Busch*

WHEN:
THURS 22 AUG – SUN 22 SEP

WHERE:
WORCESTER BOULEVARD,
RUNNING FROM THE MUSEUM
UP TOWARDS THE SQUARE

Sponsored by



Supported by



37


**DOC ROSS /
CHRISTCHURCH**

37 seconds doesn't sound very long, until you start to count it out; one thousand one, one thousand two, one thousand three... suddenly it seems an eternity; an eternity when time stands still but the earth heaves and shakes violently.

Created by Christchurch photographer Doc Ross, this collection is of 37 portraits of people affected by the February earthquake and their stories compressed into

just as many words as there were seconds of shaking. For each portrait, each person was asked to sit completely still in a chair and support their head while a 37 second exposure multiple image was taken.

WHEN:
THURS 22 AUG – SUN 3 NOV
9AM – 5PM

WHERE:
CANTERBURY MUSEUM

In collaboration
with  **Canterbury
Museum**

LIVE
AT SIX

Photo: Philip Merry



**A FASCINATING PIECE
OF THEATRE NOT TO
BE MISSED.**

– DOMINION POST

**SHOW PONY AND
OUT OF BOUNDS /
NEW ZEALAND**

When footage of a 6pm news anchor misbehaving goes viral, both her network and the competition have less than 24 hours to package the story. Whose version will the public believe, and more importantly, whose will they tune in to?

As a real-time deadline races towards them, journos, presenters and executives on both sides

are tested as the editors stitch together the night's footage live on stage.

Bring your smartphone and be part of the action. A black comedy with a thriller edge that will change the way you watch the news.

WHEN:
THURS 29 AUG, 6.30PM
FRI 30 AUG, 6.30PM
SAT 31 AUG, 6.30PM

WHERE:
AURORA CENTRE

TICKETS:
ADULT \$25
STUDENT (WITH ID) \$20
Service fee applies

DURATION:
1 HR 30 MINS, INCLUDING INTERVAL

BOOK:
ARTSFESTIVAL.CO.NZ/LIVEATSIX

Sponsored by 

Supported by  **creative
nz**
ARTS COUNCIL OF NEW ZEALAND | TE AIO TEARO

TRACES

**LES 7 DOIGTS
DE LA MAIN /
CANADA**

This high energy, enchanting circus show mixes jaw-dropping acrobatic skills with a jet-propelled urban energy.

Montreal's Les 7 doigts de la main presents circus on a human scale using everything that comes to hand from hoop tumbling to freestyle moves as the performers of *Traces* move effortlessly from one act to another – soaring, dancing, somersaulting, jumping, springing, balancing and catapulting in limitless variations backed by visual

projections, music and sheer physical prowess.

Traces is fun for the whole family and will leave you breathless and wanting more.

Photo: Michael Meseke

**A FIX OF PURE URBAN ADRENALINE.
MAD, PULSE-RACING MAGIC.**

– NEW YORK TIMES

**TIME MAGAZINE'S "TOP TEN
EVERYTHING OF 2011"**

**EYE-POPPING ATHLETICISM,
FLUID GRACE AND CHISELED
PHYSIQUES MAKE FOR THE
SEXIEST CIRCUS IN TOWN.**

– NEW YORK DAILY NEWS

WHEN:
THURS 5 SEP, 6.30PM
FRI 6 SEP, 5PM & 8.30PM
SAT 7 SEP, 2PM & 6.30PM

WHERE:
AURORA CENTRE

TICKETS:
ADULT \$45
CHILD \$25
Service fee applies

DURATION:
1 HR 30 MINS, NO INTERVAL

BOOK:
ARTSFESTIVAL.CO.NZ/TRACES

Thursday
Sponsored by



Friday
Sponsored by



Saturday
Sponsored by



CANTINA

STRUT & FRET /
AUSTRALIA

Leave your everyday life behind and enter the intoxicating world of *CANTINA*. Discover a place of faded glamour scorching with passion, rapture and desire.

A showcase of heart-stopping acrobatic skills set in a dusty world of vaudeville and seduction where the line between pleasure and pain is increasingly blurred.

Seducing audiences in London, Sydney and Auckland this year, *CANTINA* brings its cocktail of skill, danger and sensuality to Christchurch.

Featuring an outstanding cast of circus performers backed by live music, *CANTINA* is the dark chocolate of cabaret – a little bit naughty, a little bit nice and you'll long for more every night.

Contains male nudity, simulated violence and smoke features.

SPECTACULAR ACTS OF PHYSICAL STRENGTH, ENDURANCE AND ANATOMICAL UNLIKELIHOOD.

– THE AUSTRALIAN

A WINNING MIX OF CIRCUS-STYLE ATHLETICISM BLENDED WITH ELEGANTLY CHOREOGRAPHED DANCE...THERE IS THE ADDED FRISSON OF IMAGINING THE PERFORMERS MIGHT SPIN OUT OF CONTROL AND LAND ON YOUR LAP.

– NZ HERALD

WHEN:
THURS 22 – SAT 24 AUG, 8PM
SUN 25 AUG, 7PM
TUES 27 – FRI 30 AUG, 8PM
SAT 31 AUG, 7PM
Doors open 30 minutes before showtime

WHERE:
FLETCHER BUILDING
FESTIVAL CLUB

TICKETS:
GENERAL ADMISSION \$45
Service fee applies

DURATION:
1 HR, NO INTERVAL

BOOK:
ARTSFESTIVAL.CO.NZ/CANTINA

Sponsored by



the arts centre



LEO

**Y2D PRODUCTIONS
AND CHAMAELEON
PRODUCTIONS
GMBH /
GERMANY**

He dances on the ceiling like Fred Astaire, scales the walls like Spiderman and floats in mid-air like an Indian guru – escape with *Leo* into a world of the impossible ... a world where the limits of your imagination really are the limits of your world.

Leo won multiple awards at the Edinburgh Festival Fringe 2011 and astounded sell-out audiences from Tehran to New York.

Defying gravity through an ingenious combination of stage design and video projection, *Leo* embarks on a fantastic adventure which will leave you wondering which way is up and which way is down.

Leo is a funny, intriguing and at times surreal show that tricks the brain and challenges the senses.

Presented by arrangement
with Arts Projects Australia.

**ENGAGING & IMAGINATIVE ...
SIMPLY UNMISSABLE.**

– THE LIST, UK

WHEN:
THURS 5 SEP, 6.30PM
FRI 6 SEP, 6.30PM
SAT 7 SEP, 6.30PM
SUN 8 SEP, 3PM

WHERE:
CHRIST'S COLLEGE
OLD BOYS THEATRE

TICKETS:
GENERAL ADMISSION \$30
STUDENT (WITH ID) \$20
Service fee applies

DURATION:
1 HR 5 MINS, NO INTERVAL

BOOK:
ARTSFESTIVAL.CO.NZ/LEO

Sponsored by

KPMG
cutting through complexity

GIFTED

WORLD
PREMIEREDON'T TRY TO
CHANGE ME - I WON'T
BE CHANGED!

- JANET FRAME

FORTUNE THEATRE /
NEW ZEALAND

It is 1955. New Zealand's literary landscape is about to change forever. Janet Frame meets Frank Sargeson.

Behind his famous hedge, Frank has been having a difficult time with his writing but the veges are nearly ready and his old mate Harry is due any day soon.

This idyllic world of the literary 'Father of the Nation' is about to crack

open when not only Janet comes to stay – with her riddling speech and baffling behaviour – but Harry appears.

A beautifully funny, clever and very moving literary love triangle.

*Written by
Patrick Evans*

*Directed by
Conrad Newport*

*Produced by
Fortune Theatre*

WHEN:
THURS 22 AUG, 6.30PM
FRI 23 AUG, 6.30PM
SAT 24 AUG, 6.30PM
SUN 25 AUG, 3PM

WHERE:
RUDOLF STEINER SCHOOL HALL

TICKETS:
GENERAL ADMISSION \$30
STUDENT (WITH ID) \$20
Service fee applies

DURATION:
2 HRS, INCLUDING INTERVAL

BOOK:
ARTSFESTIVAL.CO.NZ/GIFTED

Sponsored by

ANDERSON LLOYD
LAWYERS

Supported by

creative
nz
ARTS COUNCIL OF NEW ZEALAND - TOI AOTIAROANEW ZEALAND PLAYWRIGHTS
PLAYMARKET
AGENT, ADVISOR, WORKSHOP

VAKA

Photo: Duncan Cole



NEIL IEREMIA HAS
SPREAD HIS ARTISTIC
ROOTS IN SEVERAL
RICH PASTS AND
GROWN UP AND OUT
INTO A SUNLIGHT OF
HIS OWN MAKING.

- NEW YORK TIMES

BLACK GRACE /
NEW ZEALAND

Following successful tours throughout Germany and North America, Black Grace brings its masterpiece *Vaka* to Christchurch.

Enjoy the high energy, sheer style and physicality of these superb dancers.

Led by founding artistic director and choreographer Neil Ieremia, Black Grace is New Zealand's leading contemporary dance company, fusing together

Pacific and contemporary dance in an extraordinary and dynamic form.

The journey of every vaka (canoe) faces challenges and danger as it navigates towards an often unknown future.

Don't miss this incredible night of spectacular New Zealand dance.

WHEN:
FRI 13 SEP, 6.30PM
SAT 14 SEP, 6.30PM

WHERE:
AURORA CENTRE

TICKETS:
PREMIUM \$45
A RESERVE ADULT \$35
A RESERVE STUDENT (WITH ID) \$20
Service fee applies

DURATION:
1 HR, NO INTERVAL

BOOK:
ARTSFESTIVAL.CO.NZ/VAKA

Sponsored by

RW Risk Worldwide

Supported by

creative
nz
ARTS COUNCIL OF NEW ZEALAND - TOI AOTIAROA

ANYBODY WAITIN'?



FAST, PHYSICAL,
AND FUNNY.
– ADELAIDE NOW

PONYDANCE / IRELAND

Leonie is waiting for Paula, Paula is waiting for a man, Bryan is waiting to be included. We're all waiting for something, mostly for something to happen.

So if you have a love for good dancing, good looks and a good time, you've come to the right place, because these guys know how to fill the time better than most.

*Best Dance Show
Award – Adelaide Fringe
Festival 2012*

WHEN:
WED 4 SEP, 7PM & 9PM
THUR 5 SEP, 7PM & 9PM
FRI 6 SEP, 7PM & 9PM
SAT 7 SEP, 7PM & 9PM
SUN 8 SEP, 7PM & 9PM

WHERE:
CBD BAR, 208 MADRAS STREET
This venue is not wheelchair accessible

TICKETS:
GENERAL ADMISSION \$20
Service fee applies

DURATION:
55 MINS, NO INTERVAL

BOOK:
ARTSFESTIVAL.CO.NZ/ANYBODYWAITIN

Sponsored by



Supported by



FAULT LINES

Photo: Leah Robertson



NEW
ZEALAND
PREMIERE

THE DANCERS BROUGHT
SARA'S VISION TO THE
STAGE WITH GRACE
AND A COMPELLINGLY
EXPRESSIVE
PERFORMANCE.

– NATALIE PAPPS,
DANCE INFORMA

SARA BRODIE / LESHAN SONG AND DANCE TROUPE CHRISTCHURCH / CHINA

When the shaking stops what's left? *Fault Lines* exposes the intimate human response to natural disaster.

Led by Christchurch locals; director Sara Brodie, assistant choreographer Ross McCormack and designer Mark McEntyre and created with the dancers of the Leshan Dance Company of southern China who experienced the

devastating Sichuan quake of 2008, *Fault Lines* offers a private view of what it is to survive in the aftermath of a quake.

Hauntingly beautiful and revealing the strange, sometimes humorous and fundamental way an earthquake affects those remaining – a rare chance to witness a stirring tribute to the resilience of the human spirit.

Featuring original music by Gareth Farr and Gao Ping recorded by the CSO.

Presented by Melbourne Festival and Christchurch Arts Festival in association with Playking Foundation.

WHEN:
THUR 19 SEP, 6.30PM
FRI 20 SEP, 6.30PM
SAT 21 SEP, 6.30PM

WHERE:
AURORA CENTRE

TICKETS:
PREMIUM \$35
A RESERVE ADULT \$25
A RESERVE STUDENT (WITH ID) \$20
Service fee applies

DURATION:
1 HR 10 MINS, NO INTERVAL

BOOK:
ARTSFESTIVAL.CO.NZ/FAULTLINES

Sponsored by



Supported by



FARINA THOMPSON
CHARITABLE TRUST

The Ministry of Culture in Beijing and Leshan Municipal Government of Sichuan Provincial Government

HOTEL



HUMOUR AND PATHOS,
DARKNESS AND LIGHT,
REALITY AND DECEPTION
MEET AND BLEND TO CAST
A MESMERISING SPELL.

– THEATREVIEW

SITE-SPECIFIC THEATRE / NEW ZEALAND

What goes on behind the closed doors of the hotel room? This is as intimate as theatre gets. Witness the twists in the unfolding stories and the interactions of the guests who inhabit this hotel room.

With a 100% New Zealand music soundscape, *Hotel* is a mesmerising exploration of these character's lives and how the room impacts on them and their behaviours. Book early – seating is very limited!

Show Night Dining Specials

Rendezvous: Share in the flavours of our Singapore experience. Enjoy a main meal and glass of local Pinot Gris in Straits Cafe before enjoying *Hotel*. Rejoin us after the performance for dessert.

Only \$45 pp.
Valid 27–31 Aug 2013.
03 943 3888

Cotswold Hotel: Indulge in a two course set dinner for only \$37 pp. Plus, we'll treat you to a free glass of bubbles to enjoy during the show.

Reservations required.
Valid 3–7 Sep 2013.
03 355 3535

WHEN:
TUES 27 – SAT 31 AUG,
6.30PM & 8PM
RENDEZVOUS HOTEL

TUES 3 – SAT 7 SEP,
6.30PM & 8PM
COTSWOLD HOTEL

TICKETS:
GENERAL ADMISSION \$30
Service fee applies

DURATION:
55 MINS, NO INTERVAL

BOOK:
ARTSFESTIVAL.CO.NZ/HOTEL

Sponsored by



Supported by



THE ANIMALS AND CHILDREN TOOK TO THE STREETS



A BRILLIANT PIECE OF
ALTERNATIVE THEATRE...
A GRAPHIC NOVEL
COME TO LIFE.

– DOMINION POST

1927 / ENGLAND

A stand-out hit of the Edinburgh Festival, this eye-popping production will thrill Christchurch audiences.

Evil children run riot and creatures of darkness rule in this gloriously grim and wickedly funny world created through astonishing animated projections, live music, performance and storytelling.

Late one night Agnes Eaves and her young daughter seek refuge in a strange place called the Bayou Mansions – and so begins the journey, part childish dream and part adult nightmare.

This wickedly twisted tale will win you over – you won't find dark humour more gleeful than this.

WHEN:
THURS 29 AUG, 6.30PM
FRI 30 AUG, 6.30PM
SAT 31 AUG, 6.30PM
SUN 1 SEP, 3PM

WHERE:
RUDOLF STEINER SCHOOL HALL

TICKETS:
GENERAL ADMISSION \$30
STUDENT (WITH ID) \$20
Service fee applies

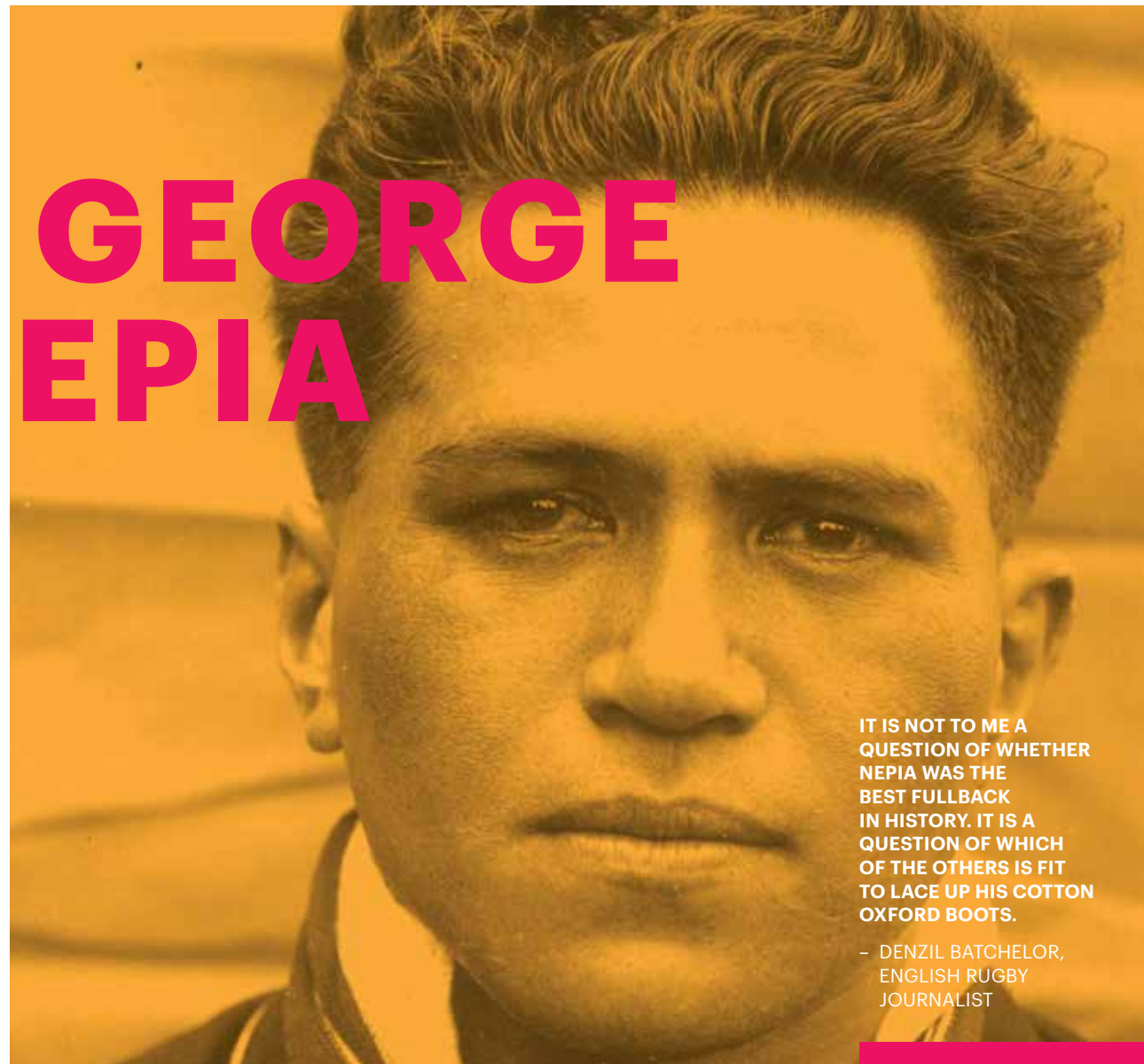
DURATION:
1 HR 10 MINS, NO INTERVAL

BOOK:
ARTSFESTIVAL.CO.NZ/
ANIMALSANDCHILDREN

Sponsored by



I, GEORGE NEPIA



IT IS NOT TO ME A QUESTION OF WHETHER NEPIA WAS THE BEST FULLBACK IN HISTORY. IT IS A QUESTION OF WHICH OF THE OTHERS IS FIT TO LACE UP HIS COTTON OXFORD BOOTS.

– DENZIL BATCHELOR,
ENGLISH RUGBY
JOURNALIST

TAWATA PRODUCTIONS / NEW ZEALAND

George Nepia – husband, father, farmer, singer, rebel... and the greatest rugby player to pull on the All Blacks jersey – an Invincible.

Leading Māori playwright Hone Kouka's award-winning play *I, George Nepia* celebrates the life of a talented East Coast lad from his humble beginnings to global rugby superstardom.

Graceful and mesmerising, Jarod Rawiri as George Nepia provides an enchanting and poetic peek into the heart, mind and life of an extraordinary man and sporting legend.

WHEN:
THURS 12 SEP, 6.30PM
FRI 13 SEP, 6.30PM
SAT 14 SEP, 6.30PM

WHERE:
RUDOLF STEINER SCHOOL HALL

TICKETS:
GENERAL ADMISSION \$25
STUDENT (WITH ID) \$20
Service fee applies

DURATION:
1 HR 15 MINS, NO INTERVAL

BOOK:
ARTSFESTIVAL.CO.NZ/IGEORGENEPIA

Sponsored by  Te Rūnanga o NGĀI TAHU

Supported by  creative nz
ARTS COUNCIL OF NEW ZEALAND / TOA MŌTEAROA

ON THE UPSIDE DOWN OF THE WORLD



UPSIDE DOWN DESERVES TO BE POPULAR FOR YEARS TO COME.

– NEW ZEALAND HERALD

AUCKLAND THEATRE COMPANY / NEW ZEALAND

This play is based on the journals of Lady Ann Martin, the young wife of our first Chief Justice who arrived in New Zealand in 1841 and set up home in Auckland.

Intrepid, intelligent and possessing a great sense of humour, she disregarded her personal disability and set about learning Māori. She established a make-shift hospital, tutored Māori school students and

dared to dream of what was possible in this brave new world.

Ann Martin's acute observations of Māori and Pakeha settlers alike have uncanny resonances for us today.

*Written by Arthur Meek
Directed by Colin McColl
Starring Laurel Devenie*

WHEN:
THURS 19 SEP, 6.30PM
FRI 20 SEP, 6.30PM
SAT 21 SEP, 6.30PM

WHERE:
RUDOLF STEINER SCHOOL HALL

TICKETS:
GENERAL ADMISSION \$25
STUDENT (WITH ID) \$20
Service fee applies

DURATION:
1 HR 35 MINS, NO INTERVAL

BOOK:
ARTSFESTIVAL.CO.NZ/UPSIDEDOWN

Sponsored by  Te Rūnanga o NGĀI TAHU

Supported by  creative nz
ARTS COUNCIL OF NEW ZEALAND / TOA MŌTEAROA

PARTY WITH THE AUNTIES



... HAPPY, LIGHT-HEARTED,
GOOD-NATURED, LAUGH-
OUT-LOUD FUNNY AND
BRILLIANT

– NELSON MAIL

NEW ZEALAND

It's Uncle Angus' 50th birthday party and the whole whanau is reunited – Uncle Shane's come all the way from Perth and Te Manawa has brought his girlfriend Sia to meet the family for the first time.

There 'll be music, drama and plenty of laughter as three high-energy performers take on multiple roles, seamlessly introducing characters we can all recognise.

Get together, grab a drink and some kai and be ready to sing-a-long– there's a party at Aunty's!

WHEN:
THURS 12 SEP, 6.30PM
FRI 13 SEP, 6.30PM
SAT 14 SEP, 6.30PM
SUN 15 SEP, 3PM

WHERE:
CHRISTCHURCH FOOTBALL CLUB,
250 WESTMINSTER STREET

TICKETS:
GENERAL ADMISSION \$25
Service fee applies

DURATION:
1 HR 10 MINS, NO INTERVAL

BOOK:
ARTSFESTIVAL.CO.NZ/
PARTYWITHTHEAUNTIES

Sponsored by



Supported by



DON GIOVANNI



NEW ZEALAND OPERA / NEW ZEALAND

“Here for a good time, not a long time” might well be the motto of Don Giovanni, a thoroughly hedonistic womaniser who will stop at nothing — even murder — in the pursuit of pleasure.

Don Giovanni cannot resist the opportunity to seduce any woman who crosses his path. But as a crowd of wronged lovers, their fiancés and other enraged

relatives grows, his fate is sealed when he kills the father of Donna Anna.

Mozart's serio-comic opera might have a villain at its heart but watching him get his comeuppance has drawn rapturous audiences since its premiere in 1788.

WHEN:
WED 21 AUG, 7PM
THURS 22 AUG, 7PM
SAT 24 AUG, 1PM

WHERE:
CBS CANTERBURY ARENA

TICKETS:
ADULT \$49.50 – \$124.50
CONCESSION \$88.50 – \$112
Group prices available
Service fee applies

DURATION:
3 HRS 15 MINS,
INCLUDING INTERVAL

BOOK:
TICKETEK.CO.NZ OR
0800 TICKETEK (842 538)

NZOPERA

BABYO



THE 'O' IS SHORT FOR 'OPERA' – BUT ACTUALLY IT CAPTURES THE EXPRESSION OF THE BABIES' FACES, AS THEY DRINK IN THE SIGHTS AND SOUNDS OF THIS SENSORY ADVENTURE.
– HERALD (SCOTLAND)

SCOTTISH OPERA / SCOTLAND

Sold out in 2011, we loved *BabyO* so much that we're bringing it back for 2013.

Tailored for babies aged six to 18 months, the show creates an interactive environment for babies and their carers in a secret garden full of ducks, fish and busy bees.

Seamlessly combining recorded music with live singing, using sounds and words that babies

can understand, *BabyO* features three fine singers from Scottish Opera.

A sensory experience that captures the imagination of babies and adults alike.

Each baby must be accompanied by a caregiver.

WHEN:
FRI 30 AUG, 10.30AM, 12PM & 1.30PM
SAT 31 AUG, 10.30AM, 12PM & 1.30PM
SUN 1 SEP, 10.30AM, 12PM & 1.30PM

WHERE:
FLETCHER BUILDING FESTIVAL CLUB

TICKETS:
\$25 FOR ONE ADULT AND BABY*
\$25 FOR ANY ADDITIONAL ADULT
*EVERY CHILD MUST BE ACCOMPANIED BY AN ADULT
Service fee applies

DURATION:
30 MINS, NO INTERVAL

BOOK:
ARTSFESTIVAL.CO.NZ/BABYO

Sponsored by **TVNZ**

SENSORYO



NEW ZEALAND PREMIERE

SCOTTISH OPERA / SCOTLAND

Enter a magical, nighttime world; take a train ride through the jungle, and meet a friendly lion who sleeps under the stars...

Scottish Opera's *SensoryO* is a brand-new interactive performance for toddlers and their carers. Aimed at children aged 18 to 36 months, this wonderful show is rich in sound, rhythm and music.

The set is inviting and tactile, and with its unique audience in mind, it introduces toddlers to live performance in a relaxed and intimate environment.

Featuring a mixture of live and recorded vocal music, and percussive sounds, *SensoryO* also uses smells, textures, actions and simple but striking visuals to bring the adventure to life.

Each toddler must be accompanied by a caregiver.

WHEN:
FRI 23 AUG, 11AM & 1PM
SAT 24 AUG, 11AM & 1PM
SUN 25 AUG, 10AM & 3PM
MON 26 AUG, 11AM & 1PM
TUES 27 AUG, 11AM & 1PM
WED 28 AUG, 11AM & 1PM

WHERE:
FLETCHER BUILDING FESTIVAL CLUB

TICKETS:
\$25 FOR ONE ADULT AND CHILD*
\$25 FOR ANY ADDITIONAL ADULT
*EVERY CHILD MUST BE ACCOMPANIED BY AN ADULT
Service fee applies

DURATION:
35 MINS, NO INTERVAL

BOOK:
ARTSFESTIVAL.CO.NZ/SENSORYO

Sponsored by **TVNZ**

THE RITE



CHRISTCHURCH SYMPHONY ORCHESTRA / CHRISTCHURCH

FARR *The Nor'West Arch*
STRAUSS Oboe Concerto

STRAVINSKY *Le Sacre du Printemps* (The Rite of Spring)

Commissioned by Christchurch Arts Festival, Gareth Farr's *Nor'West Arch* is a memorial to the victims of the February 2011 earthquake. This orchestral version was premiered by the Queensland Symphony Orchestra in remembrance

of the 2011 Queensland flood victims.

Strauss' concerto for oboe was inspired by a chance meeting with an American soldier. It features Sydney Symphony Principal Oboe Diana Doherty as soloist.

Stravinsky's *Le Sacre du Printemps* (The Rite of Spring) is considered one of the most significant works of the 20th century. For this special concert, the 90-member Christchurch Symphony Orchestra will be joined by musicians from The University of Canterbury and Christchurch Youth Orchestra.

WHEN:
SAT 31 AUG, 7.30PM

WHERE:
AIR FORCE MUSEUM OF NZ, WIGRAM

TICKETS:
ADULT \$35 – \$45
CHILD (18 YEARS & UNDER) \$15
Service fee applies

DURATION:
1 HR 45 MINS, INCLUDING INTERVAL

BOOK:
TICKETS.CSO.CO.NZ

CSO Christchurch Symphony Orchestra

amj LAMB & HAYWARD

MAGNIFICENT MOZART



NEW ZEALAND SYMPHONY ORCHESTRA / NEW ZEALAND

MOZART *The Abduction from the Seraglio*: Overture

MOZART Sinfonia Concertante

MOZART Symphony No.40 in G minor

American conductor Andrew Grams conducts the New Zealand Symphony Orchestra in this special Christchurch Arts Festival concert, *Magnificent Mozart*.

Showcasing the rich complexity of emotions in Mozart's music, the concert opens with the famous overture to his opera *The Abduction from the Seraglio* – a piece infused with cheerfulness and exotic 'Turkish' sounds. Mozart's Sinfonia Concertante is a sublime concerto for violin and viola featuring NZSO Concertmaster Vesa-Matti Leppänen and NZSO Section Principal Viola, Julia Joyce.

The concert ends with the very recognisable Symphony No. 40 in G minor – appropriately nicknamed 'the Great'.

WHEN:
SAT 24 AUG, 7.30 PM

WHERE:
CBS CANTERBURY ARENA

TICKETS:
ADULT \$27 – \$65
CONCESSION \$22 – \$54
CHILD (18 YEARS & UNDER) \$15
Service fee applies

DURATION:
1 HR 25 MINS, INCLUDING INTERVAL

BOOK:
TICKETEK.CO.NZ OR
0800 TICKETEK (842 538)

NZSO New Zealand Symphony Orchestra
Te Kaitiaki o Aotearoa

In association with

RYMAN

THE WORDS AND MUSIC OF JACQUES BREL

Photo: Toaki Okano



EXTRAORDINARY WORK WHICH IS RAW, FUNNY, PASSIONATE AND ENTERTAINING.
– NATIONAL BUSINESS REVIEW

SILO / NEW ZEALAND

Dark, sardonic, passionate, witty, revolutionary – Jacques Brel's musical narratives form a life-affirming take on the human condition.

From *Amsterdam* to *Ne Me Quitte Pas*, these songs transcend time and place and his music has been performed by legends including David Bowie, Nina Simone, Leonard Cohen and Martha Wainwright.

In Silo's hit production, iconic Kiwi rock stars Jon Toogood and Julia Deans join revered singers Jennifer Ward-Lealand and Tama Waipara to interpret Brel's infamous songbook. Directed by Michael Hurst and featuring a stellar band led by Leon Radojkovic.

The Words and Music of Jacques Brel will have you on your feet and coming back for more.

Profound. Intimate. Bold. Cabaret noir.

WHEN:
SAT 31 AUG, 9.30PM
Doors open 9PM

SUN 1 SEP, 7PM
Doors open 6PM

WHERE:
FLETCHER BUILDING
FESTIVAL CLUB

TICKETS:
GENERAL ADMISSION \$35
STUDENT (WITH ID) \$25
Service fee applies

DURATION:
2 HRS, INCLUDING INTERVAL

BOOK:
ARTSFESTIVAL.CO.NZ/BREL

Sponsored by **DuncanCotterill**
LAWYERS

Supported by **creative.nz**
ARTS COUNCIL OF NEW ZEALAND / TOI AOTIAROA

SUPER MUSICIAN



WILD CABARET ROCK CONCERT.
– HERALD SUN (MELBOURNE)

DIE ROTEN PUNKTE / BERLIN

Astrid and Otto are Die Roten Punkte (The Red Dots). Orphaned when Astrid was 12 and Otto was 9, the brother and sister duo found shelter in a Berlin squat and never rockin' well looked back.

Super Musician is their second full-length show and comes to New Zealand after selling out in Edinburgh, New York, Sydney, Montreal and Dublin.

A wild, rock 'n' roll cabaret ride, *Super Musician* is Die Roten Punkte at its best – filled with hilarious, catchy and award-winning pop songs, constantly interrupted by the squabbling of the dysfunctional siblings.

Astrid's avant-garde style and legendary antics inspire both reverence and fear, while Otto's dynamic stage presence brings to mind a whirling dervish on meth.

WHEN:
THURS 5 SEP, 8PM
FRI 6 SEP, 8PM
Doors open 7PM

WHERE:
FLETCHER BUILDING
FESTIVAL CLUB

TICKETS:
GENERAL ADMISSION \$25
Service fee applies

DURATION:
1 HR 15 MINS, NO INTERVAL

BOOK:
ARTSFESTIVAL.CO.NZ/
SUPERMUSICIAN

Sponsored by **FESTIVAL PATRONS AND FRIENDS**

Supported by **Colliers INTERNATIONAL**

LAWRENCE ARABIA

CHRISTCHURCH

Lawrence Arabia returns across the desert sands for his second run at the Festival. Lawrence Arabia is the pseudonym of a born and bred Cantab, one James Milne. But the sun-drenched folk pop of this hometown boy has travelled far and wide, securing rave reviews in the UK and touring Europe and the US.

With the support of an enchanting string quartet, Lawrence Arabia performs his moody, orchestral

tinged, critically acclaimed album, *The Sparrow* as well as a selection of songs from previous albums *Chant Darling* and *Lawrence Arabia*.

Lawrence Arabia is a true showman.

WHEN:
SAT 7 SEP, 8PM
Doors open 7PM

WHERE:
FLETCHER BUILDING
FESTIVAL CLUB

TICKETS:
GENERAL ADMISSION \$25
Service fee applies

DURATION:
2 HRS, INCLUDING INTERVAL

BOOK:
ARTSFESTIVAL.CO.NZ/
LAWRENCEARABIA

Sponsored by



Supported by



NO DEPRESSION

NEW
ZEALAND
PREMIERE

THE EASTERN / CHRISTCHURCH

A rollicking, reaffirming roustabout through the history of the kiwi folk song...

Often referred to as New Zealand's hardest working band, The Eastern shakes out the road dust and delves into the stories and histories contained within the humble folk song.

No Depression offers a glimpse at the lives and experiences of those

within these shaky isles – a place where bush ballads nestle up with hip-hop, and punk rock is locked in step with pub shouts and sing-alongs.

Funny, political, heartbreaking and uplifting these songs make a commentary on the state of New Zealand as it was, as it is and as it will be.

WHEN:
SUN 8 SEP, 8PM
Doors open 7PM

WHERE:
FLETCHER BUILDING
FESTIVAL CLUB

TICKETS:
GENERAL ADMISSION \$20
Service fee applies

DURATION:
2 HRS, INCLUDING INTERVAL

BOOK:
ARTSFESTIVAL.CO.NZ/
NODEPRESSION

Sponsored by



Supported by



FESTIVAL GUIDE 32

THE HARD ROAD

**ANNIE CRUMMER
JULIA DEANS TAMA
WAIPARA /
NEW ZEALAND**

Join three kiwi musos at the top of their game as they hit the road in song and style.

Annie Crummer, Julia Deans and Tama Waipara delve into the great songbook to bring you their renditions of songs from the hard road.

Armed with their original numbers, and favourite songs spanning ancestral

folk to modern pop, these powerhouse performers invite you to share their stories of the hard road. Join them for an intimate night of great music.

WHEN:
THURS 12 SEP, 8PM
FRI 13 SEP, 8PM
Doors open 7PM

WHERE:
FLETCHER BUILDING
FESTIVAL CLUB

TICKETS:
GENERAL ADMISSION \$25
Service fee applies

DURATION:
1 HR 50 MINS,
INCLUDING INTERVAL

BOOK:
ARTSFESTIVAL.CO.NZ/HARDROAD

Sponsored by



LIFE IS ONE BIG ROAD
WITH LOTS OF SIGNS.
– BOB MARLEY

CALEXICO

Photo: Rocky Yosek

USA

Calexico, the Tucson, Arizona-based band has been described as “eclectic indie rockers sprinkled with desert dust”. The group’s core members, Joey Burns and John Convertino have long called upon an extended range of musical influences – Portugese fado, 50’s jazz, gypsy, 60’s surf, country twang and dark indie rock – blending them together so distinctly that they have almost become a genre of their own, sometimes called “desert noir.”

Since the band formed in 1996, they have recorded seven studio albums, including last years critically acclaimed *Algiers*. They’ve also recorded a variety of collaborative EPs, live albums, soundtrack songs and scores with artists including Iron and Wine, Neko Case, My Morning Jacket, Amos Lee, Willie Nelson, and Nancy Sinatra.

WHEN:
SAT 14 SEP, 8PM
SUN 15 SEP, 8PM
Doors open 7PM

WHERE:
FLETCHER BUILDING
FESTIVAL CLUB

TICKETS:
GENERAL ADMISSION \$35
Service fee applies

DURATION:
2 HRS, NO INTERVAL

BOOK:
ARTSFESTIVAL.CO.NZ/CALEXICO

Sponsored by

McCARTHY



...THE WASH OF
SOUNDS COMBINING
SO EFFORTLESSLY TO
ALWAYS FEEL BOTH
PERFECTLY STRUCTURED
AND EVER-SO-SLIGHTLY
IMPROVISED.
– DOMINION POST

ADAM PAGE



IT IS A RARE TREAT TO SEE A MUSICIAN WITH SUCH A MASTERFUL GRASP OF HIS CRAFT PERFORMING WITH SUCH EFFORTLESS CHARISMA, HUMOUR, AND INVENTIVENESS. I WAS BLOWN AWAY.

— TIM MINCHIN

NEW ZEALAND

Multi-instrumentalist Adam Page will wow you with his high energy, his sense of fun and his fantastic music.

Adam specialises in recording live instruments and looping them to compose intricate grooves in many different styles. Starting with a saxophone, he'll loop its sound with bass, beat boxing, banjo, clarinet, and even the didgeridoo.

The result is an eclectic night of up-beat music with styles ranging from funk to jazz, tango to classical and a hint of afrobeat.

WHEN:
FRI 13 SEP, 11PM
Doors open 10.30PM

WHERE:
FLETCHER BUILDING
FESTIVAL CLUB

TICKETS:
GENERAL ADMISSION \$20
Service fee applies

DURATION:
1 HR, NO INTERVAL

BOOK:
ARTSFESTIVAL.CO.NZ/
ADAMPAGE

Sponsored by  **MONTEITH'S**
BREWING CO

TOTALLY WEILL



DELANEY DAVIDSON NAOMI FERGUSON / CHRISTCHURCH

Winter 2005: In Switzerland Delaney Davidson performs Kurt Weill; on the other side of the world Naomi Ferguson discovers an old chest containing the complete *Die Dreigroschenoper*; and so dreams begin ...

After years touring Europe, Delaney and Naomi bend gender and age, musical cliches and standards with Delaney's rogues' gallery of beggars and

pirates, and Naomi's stable of seasoned professionals to bring you *Totally Weill*.

Join the ride on Planet Weill from the hooded *Mack the Knife*; tender and wistful *Lost in the Stars*, mysterious *Surabaya Johnny* to the cold-blooded *Pirate Jenny*.

Delaney and Naomi are joined by a musical cast including Janice Gray, Charlotte Ivey, Alex van den Broek, Ben Woolley, Anita Clark, Joe McCallum, Sophia Bidwell, Gretchen La Roche, Simon Gregory, Mark La Roche and Reuben Derrick.

WHEN:
THURS 19 SEP, 8PM
Doors open 7PM

WHERE:
FLETCHER BUILDING
FESTIVAL CLUB

TICKETS:
GENERAL ADMISSION \$20
Service fee applies

DURATION:
2 HRS, INCLUDING INTERVAL

BOOK:
ARTSFESTIVAL.CO.NZ/
TOTALLYWEILL

Sponsored by

nv interactive

SOUL IN THE CITY



BELLA KALOLO / NEW ZEALAND

Be prepared to lose yourself in Bella Kalolo's rich soulful voice.

Bella is very excited to be coming home to Christchurch to release her second album. Now Wellington-based, Bella and her classy three-piece band has wowed audiences at Glastonbury Festival and is looking forward to heading to Christchurch to bring some soul back to the city.

Best Female Artist at the 2012 Pacific Music Awards secured Bella's place as one of our top female vocalists but she's been performing and recording for 10 years with Don McGlashan, Dave Dobbyn, Hollie Smith, Fat Freddy's Drop, Tina Cross, Jackie Clarke, Suzanne Lynch, the NZSO, and Nathan Haines, to name just a few.

Feel the charm and warmth of this 'Soul sister in the City'.

WHEN:
SAT 21 SEP, 8PM
Doors open 7PM

WHERE:
FLETCHER BUILDING
FESTIVAL CLUB

TICKETS:
GENERAL ADMISSION \$25
Service fee applies

DURATION:
2 HRS, INCLUDING INTERVAL

BOOK:
ARTSFESTIVAL.CO.NZ/
SOULINTHECITY

Sponsored by



FLY MY PRETTIES



NEW ZEALAND

A melding of some of New Zealand's finest musicians and rising stars, Fly My Pretties brings a new cast of talent and a new book of songs to the Festival.

This time around, the collective will draw on the acoustic themes and musical styles of their first releases while focusing on original music and artistic collaboration – this outing will be more of an experience than just a concert.

Past line-ups of Fly My Pretties have included members of The Black Seeds, Fat Freddy's Drop, The Phoenix Foundation and Kora, along with singer/songwriters Hollie Smith, Amiria Grenell, Anna Coddington, L.A Mitchell and Ria Hall.

Enjoy Fly My Pretties up close and personal in the Fletcher Building Festival Club.

WHEN:
SAT 22 SEP, 4PM & 8PM
Doors open 30mins
prior to showtime

WHERE:
FLETCHER BUILDING
FESTIVAL CLUB

TICKETS:
4PM SHOW \$40
8PM SHOW \$45
Service fee applies

DURATION:
4PM SHOW – 1 HR 30 MINS,
NO INTERVAL
8PM SHOW – 2 HRS 40 MINS,
INCLUDING INTERVAL

BOOK:
ARTSFESTIVAL.CO.NZ/
FLYMYPRETTIES

BETWEEN ZERO AND ONE



STRIKE PERCUSSION & JOHN PSATHAS / NEW ZEALAND

What happens in the universe's downtime? What would we humans do if we knew none of our gods were watching? Maybe we'd spend all our time trying to find each other ... or maybe we'd release ourselves into an ecstatic frenzy...

Between Zero and One is a music and visual performance on an epic scale – a new percussion work written by internationally acclaimed

New Zealand/Greek composer John Psathas, performed by Wellington's Strike Percussion and directed by Auckland's Philippa Campbell.

Beginning and ending with a Big Bang, expect wild instrumentation, complex rhythms, moments of delicacy and warmth together with Strike's signature charm. Interactive projection designed by Australasian artist Tim Gruchy turns the space into a work of art. Also featuring composition from David Downes and Jack Hooker, plus performances from guest musicians.

WHEN:
FRI 6 SEP, 6.30PM
SAT 7 SEP, 6.30PM

WHERE:
RUDOLF STEINER SCHOOL HALL

TICKETS:
GENERAL ADMISSION \$25
STUDENT (WITH ID) \$20
Service fee applies

DURATION:
1 HR 10 MINS, NO INTERVAL

BOOK:
ARTSFESTIVAL.CO.NZ/
BETWEENZEROANDONE

Sponsored by **THE PHILIP
CARTER FAMILY**

Supported by **ADRIENNE,
LADY STEWART**

creative
nz
ARTS COUNCIL OF NEW ZEALAND TOI IOTIAROA

CHRISTCHURCH BRASS



CHRISTCHURCH

The ultimate 'band in the park' concert – *Christchurch Brass* begins with a lone military musician and gradually builds as seven brass bands join in.

Beginning with the renowned New Zealand Army Band performing their internationally acclaimed marching display, then the current Champion Brass Band of New Zealand, Woolston Brass. Together the two bands will form a really

"big" Big Band, complete with rhythm section and vocalists, to perform classic swing jazz.

Next will be Canterbury Brass, followed by Addington Brass, to perform some powerful orchestral works; then Woolston Concert Brass, New Brighton Brass and Sumner Brass join in to perform a variety of familiar music.

Experience the rousing music of the biggest massed band ever seen in Christchurch.

WHEN:
SUN 22 SEP, 2PM

WHERE:
NORTH HAGLEY PARK BY
THE ARMAGH ST BRIDGE

DURATION:
1 HR 30 MINS, NO INTERVAL

Sponsored by



Supported by



MIKE NOCK TRIO AND NZ TRIO



**WORLD
PREMIERE**

ONE OF THE WORLD'S KEY
JAZZ PIANISTS FOR THE
PAST 45 YEARS.

– SYDNEY MORNING
HERALD (ON MIKE NOCK)

IT IS ALWAYS A PLEASURE
TO RELAX AND ENJOY THE
SHEER MUSICIANSHIP OF
THIS GROUP.

– NZ HERALD (ON NZTRIO)

AUSTRALIA / NEW ZEALAND

Jazz and classical music come together on stage when two of New Zealand's best-loved trios combine their considerable talents in this special concert featuring the world premiere of Mike Nock's new work *Vicissitudes*.

A musical celebration of the worlds of jazz and classical music, *Vicissitudes* reflects on our shared ability to overcome dire circumstances.

The concert also features the Mike Nock Trio playing jazz standards and original music, and NZTrio performing Paul Schoenfield's *Cafe Music*.

WHEN:
FRI 20 SEP, 8PM
Doors open 7PM

WHERE:
FLETCHER BUILDING
FESTIVAL CLUB

TICKETS:
GENERAL ADMISSION \$25
Service fee applies

DURATION:
2 HRS, INCLUDING INTERVAL

BOOK:
ARTSFESTIVAL.CO.NZ/
MIKENOCKNZTRIO

Sponsored by **ROBERT AND BARBARA
STEWART TRUST**

Supported by **creative nz**
ARTS COUNCIL OF NEW ZEALAND / TOI AOTEAROA

BETWEEN DARKNESS AND LIGHT



A CAPTIVATING RECITAL
OF SPELLBINDING BEAUTY
AND DEPTH.

– OTAGO DAILY TIMES

JENNY WOLLERMAN (SOPRANO) WITH MICHAEL HOUSTOUN (PIANO) / NEW ZEALAND

Evening moves us towards sleep and contemplation of the end of our days; the depths of night can be a time of emotional turmoil, bright dreams and dark despair; morning brings the bright sun, brimming with promise, new life and new love.

Acclaimed soprano Jenny Wollerman explores the

emotional spaces between darkness and light through a series of songs by master composers of the nineteenth century right up to the present day.

Jenny performs with New Zealand's leading pianist Michael Houston, and the show's stunning lighting and set are designed by Tony Rabbit.

"an exquisite theatrical recital, beautifully and expressively rendered with both power and restraint by performers at the top of their game."
– Otago Daily Times

WHEN:
SUN 15 SEP, 4PM

WHERE:
RUDOLF STEINER
SCHOOL HALL

TICKETS:
GENERAL ADMISSION \$25
STUDENT (WITH ID) \$20
Service fee applies

DURATION:
1 HR, NO INTERVAL

BOOK:
ARTSFESTIVAL.CO.NZ/
DARKNESSANDLIGHT

Sponsored by **HEARTLAND
BANK**



CHRISTCHURCH
POPS CHOIR

CHRISTCHURCH

You don't expect to be treated to a daytime choir performance on your regular trip to the shopping mall, however during the Arts Festival you may get just that!

The Christchurch Pops Choir sings contemporary and 'popular' music with passion, energy and gusto.

The choir's repertoire includes rock, jazz, gospel, musical theatre and more – from Gershwin to Gaga there is something to please everyone's musical tastes.

Listen out around the Festival as Christchurch Pops Choir pops up here and there!

WHEN:
POPPING UP WHEN
YOU LEAST EXPECT IT

WHERE:
IN CHRISTCHURCH
SHOPPING MALLS -
WHERE YOU LEAST
EXPECT THEM



NEW ZEALAND
GUITAR
QUARTET

NEW ZEALAND

Formed in Wellington in 2010, the New Zealand Guitar Quartet is quickly developing a following in New Zealand and overseas.

Their Festival programme showcases their best repertoire from arrangements of favourites by Bach and Rimsky-Korsakov, to 20th century guitar star Leo Brouwer from Cuba and Kiwi composer Craig Utting; while the chameleon quality of the classical guitar comes out in the pieces by prolific Brazilian composer Paulo Bellinati and Afro-Cuban star Carlos Rafael Rivera.

WHEN:
SUN 25 AUG, 1PM

WHERE:
FLETCHER BUILDING
FESTIVAL CLUB

TICKETS:
GENERAL ADMISSION \$20
Service fee applies

DURATION:
1 HR 20 MINS,
INCLUDING INTERVAL

BOOK:
ARTSFESTIVAL.CO.NZ/NZGQ

Presented in association
with Chamber Music
New Zealand



BEETHOVEN
RECYCLE:
PART TWO

MICHAEL HOUSTOUN /
NEW ZEALAND

Ranked among the greatest Beethoven pianists of our age, Michael Houston is performing an historic cycle of all 32 Beethoven piano sonatas in 40 concerts throughout the year.

Part Two of Beethoven reCYCLE comes to Christchurch during the Festival and features one of the most famous of the composer's piano sonatas, *Appassionata*.

WHEN:
SUN 1 SEP, 2PM

WHERE:
CHRISTCHURCH TRANSITIONAL
CATHEDRAL

TICKETS:
ADULT A RESERVE \$60
ADULT B RESERVE \$50
STUDENT RUSH (ON THE DAY) \$15
CHILD \$10
Service fee applies

DURATION:
2 HRS, INCLUDING INTERVAL

BOOK:
TICKETEK.CO.NZ OR
0800 TICKETEK (842 538)



LAZARUS STRING
QUARTET

NEW ZEALAND

The Lazarus String Quartet return home to Canterbury. Winners of the ROSL Arts/Pettman Scholarship 2010, the quartet is currently based in Germany, but heads home to Christchurch for a special Festival concert.

The concert sandwiches one of the brilliant Icefield Sonnets by American composer Pierre Jalbert, *North is a Notion*, between Beethoven's "quartet of bows and curtseys", and Brahms' intensely romantic first string quartet.

WHEN:
THURS 5 SEP, 1PM

WHERE:
FLETCHER BUILDING
FESTIVAL CLUB

TICKETS:
GENERAL ADMISSION \$20
Service fee applies

DURATION:
1 HR 20 MINS,
INCLUDING INTERVAL

BOOK:
ARTSFESTIVAL.CO.NZ/LAZARUS

Presented in association
with Chamber Music
New Zealand



PHILIP NORMAN: A MUSICAL JOURNEY

CHRISTCHURCH

Philip Norman is alive and well and composing in Christchurch.

With his *Peter Pan* ballet flying to Perth, a Court Theatre premiere for his stage musical *The Great Art War*, and the inaugural Lilburn Research Fellowship at the National Library, 2013 is a busy year for Philip Norman.

This illustrated talk about being a composer has been developed specially for the Festival, and is marked by wit, wisdom and insight punctuated with a selection of his music.

Performers include Juliet Reynolds Midgely, Mark Hobson and Hamish Oliver along with some of Christchurch's finest up-and-coming musicians.

WHEN:
FRI 6 SEP, 1PM

WHERE:
FLETCHER BUILDING
FESTIVAL CLUB

TICKETS:
GENERAL ADMISSION \$20
Service fee applies

DURATION:
1 HR, NO INTERVAL

BOOK:
ARTSFESTIVAL.CO.NZ/
PHILIPNORMAN

Sponsored by
**FESTIVAL PATRONS
AND FRIENDS**

Supported by
**Colliers
INTERNATIONAL**



BAROQUE DAWN TO DUSK

BAROCCA / NEW ZEALAND

Early music ensemble Barocca performs *Baroque Dawn to Dusk*, an evocative exploration of the two dominant musical styles of the early eighteenth century: Italian and French.

Tracing the hours of the day with music from both famous and little-known composers, Barocca takes us from joyful sunrise, marked with a prelude by Louis Couperin, to the veil of gentle night, drawn by Handel's cantata *Nel dolce dell'oblio*.

WHEN:
SUN 8 SEP, 1PM

WHERE:
FLETCHER BUILDING
FESTIVAL CLUB

TICKETS:
GENERAL ADMISSION \$20
Service fee applies

DURATION:
1 HR, NO INTERVAL

BOOK:
ARTSFESTIVAL.CO.NZ/BAROCCA

Sponsored by
**george
christchurch**

Presented in association
with Chamber Music
New Zealand



THE SOLDIER'S TALE

CHRISTCHURCH SYMPHONY ORCHESTRA / NEW ZEALAND

Composed in 1918, Stravinsky's *The Soldier's Tale* is based on a Russian folk tale about a soldier who makes a deal with the devil, trading his fiddle for a book that predicts the future.

Exploring themes of greed, avarice and power, *The Soldier's Tale* is as relevant today as when it was first composed.

Originally composed for seven instruments; clarinet, bassoon, trumpet, trombone, violin, double bass and percussion, with three actors and a dancer; for this performance, the orchestra will perform alongside some of the city's leading contemporary performing artists.

WHEN:
WED 18 SEP, 6.30PM & 8.30PM
THURS 19 SEP, 11AM & 1PM

WHERE:
FLETCHER BUILDING
FESTIVAL CLUB

TICKETS:
ADULT \$25 – \$35
CHILD (18 YEARS & UNDER) \$15
Service fee applies

DURATION:
50 MINS, NO INTERVAL

BOOK:
TICKETS.CSO.CO.NZ

CSO
Christchurch Symphony
Orchestra

am
Insurance

**LEIGHS
CONSTRUCTION**



GOLDNER STRING QUARTET AND PIERS LANE

AUSTRALIA

Immensely popular on both sides of the Tasman, the multi-award winning Goldner String Quartet is joined by long-time friend and recording partner, pianist Piers Lane.

The centrepiece of the concert is the gorgeous Elgar piano quintet that won them the Gramophone Critics' Choice Award.

Also featuring is a new work by New Zealand composer Gareth Farr, and one of the most dramatic and thrilling works ever composed – Schubert's *Death and the Maiden* quartet.

WHEN:
SUN 22 SEP, 2PM

WHERE:
CHRISTCHURCH TRANSITIONAL
CATHEDRAL

TICKETS:
ADULT A RESERVE \$60
ADULT B RESERVE \$50
STUDENT RUSH (ON THE DAY) \$15
CHILD \$10
Service fee applies

DURATION:
1 HR 50 MINS,
INCLUDING INTERVAL

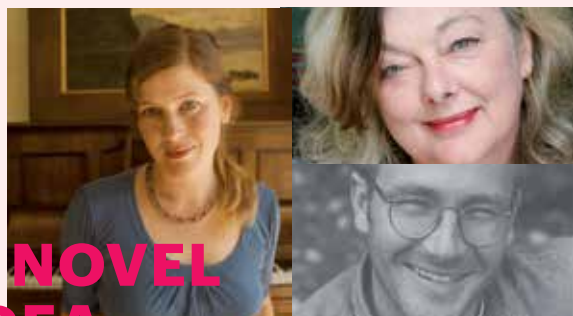
BOOK:
TICKETEK.CO.NZ OR
0800 TICKETEK (842 538)

**Chamber Music
New Zealand**



FESTIVAL OF IDEAS

A NOVEL IDEA



**STEPHANIE JOHNSON, SARAH LAING
CARL NIXON WITH RACHAEL KING /
NEW ZEALAND**

As the latest richly diverse works from award-winning writers Stephanie Johnson, Sarah Laing and Carl Nixon show, New Zealand fiction can no longer be neatly stereotyped as grimly introspective. They talk to Rachael King about their work and the many different facets of life explored in their novels.

Stephanie Johnson is a novelist, short story writer and poet. Her new book, *The Writing Class*, is a novel about writing a novel.

Writer and graphic designer Sarah Laing is the author of the short story collection, *Coming Up Roses*, and two novels, *Dead People's Music* and the recent *The Fall of Light*.

The Virgin and the Whale – a love story is the latest novel by Christchurch novelist, short story writer and playwright Carl Nixon. His first novel, *Rocking Horse Road*, is being made into a feature film.

WHEN:
SAT 7 SEP, 11AM

WHERE:
FLETCHER BUILDING
FESTIVAL CLUB

TICKETS:
GENERAL ADMISSION \$10
Service fee applies

DURATION:
1 HR, NO INTERVAL

BOOK:
ARTSFESTIVAL.CO.NZ/IDEAS



GET OFF THE GRASS



**SHAUN HENDY WITH KIM HILL /
NEW ZEALAND**

Get off the Grass is a brilliant collaboration between Shaun Hendy and the late Sir Paul Callaghan taking readers on an intellectual adventure, from David Ricardo and Adam Smith, to economic geography and the science of complex networks. The message is clear, 'get off the grass' and learn to live off knowledge rather than nature.

Shaun talks with Kim Hill about why we need to start taking science seriously and seeing ourselves as people of knowledge, not just of the land.

Shaun Hendy is a Professor of Computational Physics at Victoria University of Wellington and is an Industry and Outreach Fellow at Industrial Research Ltd.

In 2012 he won the Callaghan Medal and Prime Ministers' Science Communication Prize.

WHEN:
SAT 7 SEP, 2PM

WHERE:
FLETCHER BUILDING
FESTIVAL CLUB

TICKETS:
GENERAL ADMISSION \$10
Service fee applies

DURATION:
1 HR, NO INTERVAL

BOOK:
ARTSFESTIVAL.CO.NZ/IDEAS



THE STATE OF THE PLAY



**BRIAR GRACE-SMITH, VICTOR
RODGER, FIONA FARRELL /
NEW ZEALAND**

Three very different and exciting contemporary playwrights – Briar Grace-Smith, Victor Rodger and Fiona Farrell – discuss what inspires, challenges and intrigues them as they write for the New Zealand stage.

Briar Grace-Smith, of Nga Puhi descent, is an award-winning playwright. Her plays include *Nga Pou Wahine*, *When Sun and Moon Collide* and *Purapurawhetu*.

Victor Rodger is a Christchurch-born playwright of Samoan and Scottish descent. His plays include *Sons*, *My Name is Gary Cooper* and *At the Wake*.

Fiona Farrell is best known as an award-winning novelist, poet and non-fiction writer. Her latest play, *Snap*, adapted from Ngaio Marsh's novel, *Photo Finish*, will premiere later this year.

WHEN:
SUN 8 SEP, 11AM

WHERE:
FLETCHER BUILDING
FESTIVAL CLUB

TICKETS:
GENERAL ADMISSION \$10
Service fee applies

DURATION:
1 HR, NO INTERVAL

BOOK:
ARTSFESTIVAL.CO.NZ/IDEAS



WITH BOLD NEEDLE AND THREAD



**ROSEMARY MCLEOD WITH
VITA COCHRAN /
NEW ZEALAND**

In her new book, *With Bold Needle and Thread: Adventures in Vintage Needlecraft*, well-known columnist and craft and needlework expert Rosemary McLeod offers an enticing collection of 47 vintage projects with a modern twist.

These are mixed with memoir, fascinating social history and useful tips and hints – and illustrated with alluring photographs by Jane Ussher.

Rosemary talks with Christchurch maker Vita Cochran about her passion for New Zealand's textile past and the joys of creating and collecting.

WHEN:
SUN 8 SEP, 3PM

WHERE:
FLETCHER BUILDING
FESTIVAL CLUB

TICKETS:
GENERAL ADMISSION \$10
Service fee applies

DURATION:
1 HR, NO INTERVAL

BOOK:
ARTSFESTIVAL.CO.NZ/IDEAS





FESTIVAL OF IDEAS

LLOYD GEERING LIVING THIS LIFE



NEW ZEALAND

We often seek happiness, yet this is a by-product of living life to its full potential according to Sir Lloyd Geering. Just how do we create meaning in our human lives against a background of cosmic indifference?

Lloyd Geering's views on Christianity led to his being tried for heresy in 1967 in one of Christchurch's now demolished churches. He has moved from the margins to the mainstream in religious thinking and in his standing in our country – as a knight and a Member of the Order of New Zealand.

MOANA JACKSON – WHO OWNS WATER?

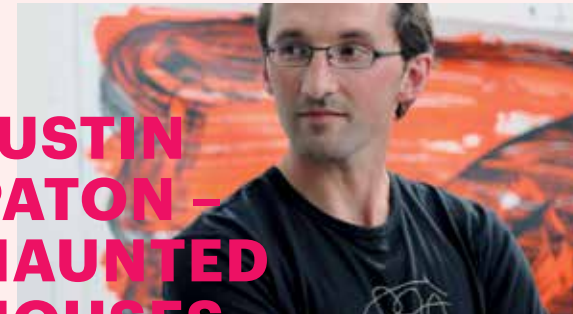


NEW ZEALAND

There's a political fight, a battle in the courts and various findings from the Waitangi Tribunal – not to mention the fulminations on talk-back radio. Water ownership and water rights stir up a ready response.

Moana Jackson is a lawyer specialising in Treaty of Waitangi and constitutional issues. He was a critic of the foreshore and seabed legislation and of the 2007 police raids on Tuhoe. He is chair of the Independent Maori Constitutional Working Group. He comes to issues with a huge depth of knowledge and a sharply critical mind.

JUSTIN PATON – HAUNTED HOUSES



CHRISTCHURCH

For almost as long as people have been living in houses, they have also been fascinated by ruined and abandoned ones. Why are these ruins so compelling? And what do they tell us about the idea of home?

From the abandoned cottages of backblocks New Zealand to the ruins of Hadrian's Villa in Rome, Justin Paton explores the meaning and value of 'haunted houses'.

Justin Paton is an award-winning art writer, a former editor of *Landfall*, and Senior Curator at Christchurch Art Gallery. He was the 2012 Katherine Mansfield Fellow in Menton, France.

POETRY AND SONG



BILL MANHIRE, HANNAH GRIFFIN, NORMAN MEEHAN / NEW ZEALAND

Leading New Zealand poet Bill Manhire introduces a genre-busting session where his poems become stunningly beautiful songs.

Hannah Griffin's voice will reach into your heart and she is accompanied by Norman Meehan on the piano (he set the poems to music).

They spoke and played to huge ovations at the Frankfurt Book Fair last year and they have made three recordings – *Buddhist Rain*, *Making Baby Float* and *These Rough Notes*. Come and be surprised and delighted.

WHEN:
SAT 14 SEP, 11AM

WHERE:
FLETCHER BUILDING
FESTIVAL CLUB

TICKETS:
GENERAL ADMISSION \$5
Service fee applies

DURATION:
1 HR, NO INTERVAL

BOOK:
ARTSFESTIVAL.CO.NZ/IDEAS

WHEN:
SAT 14 SEP, 1PM

WHERE:
FLETCHER BUILDING
FESTIVAL CLUB

TICKETS:
GENERAL ADMISSION \$5
Service fee applies

DURATION:
1 HR, NO INTERVAL

BOOK:
ARTSFESTIVAL.CO.NZ/IDEAS

WHEN:
SUN 15 SEP, 11AM

WHERE:
FLETCHER BUILDING
FESTIVAL CLUB

TICKETS:
GENERAL ADMISSION \$5
Service fee applies

DURATION:
1 HR, NO INTERVAL

BOOK:
ARTSFESTIVAL.CO.NZ/IDEAS

WHEN:
SUN 15 SEP, 1PM

WHERE:
FLETCHER BUILDING
FESTIVAL CLUB

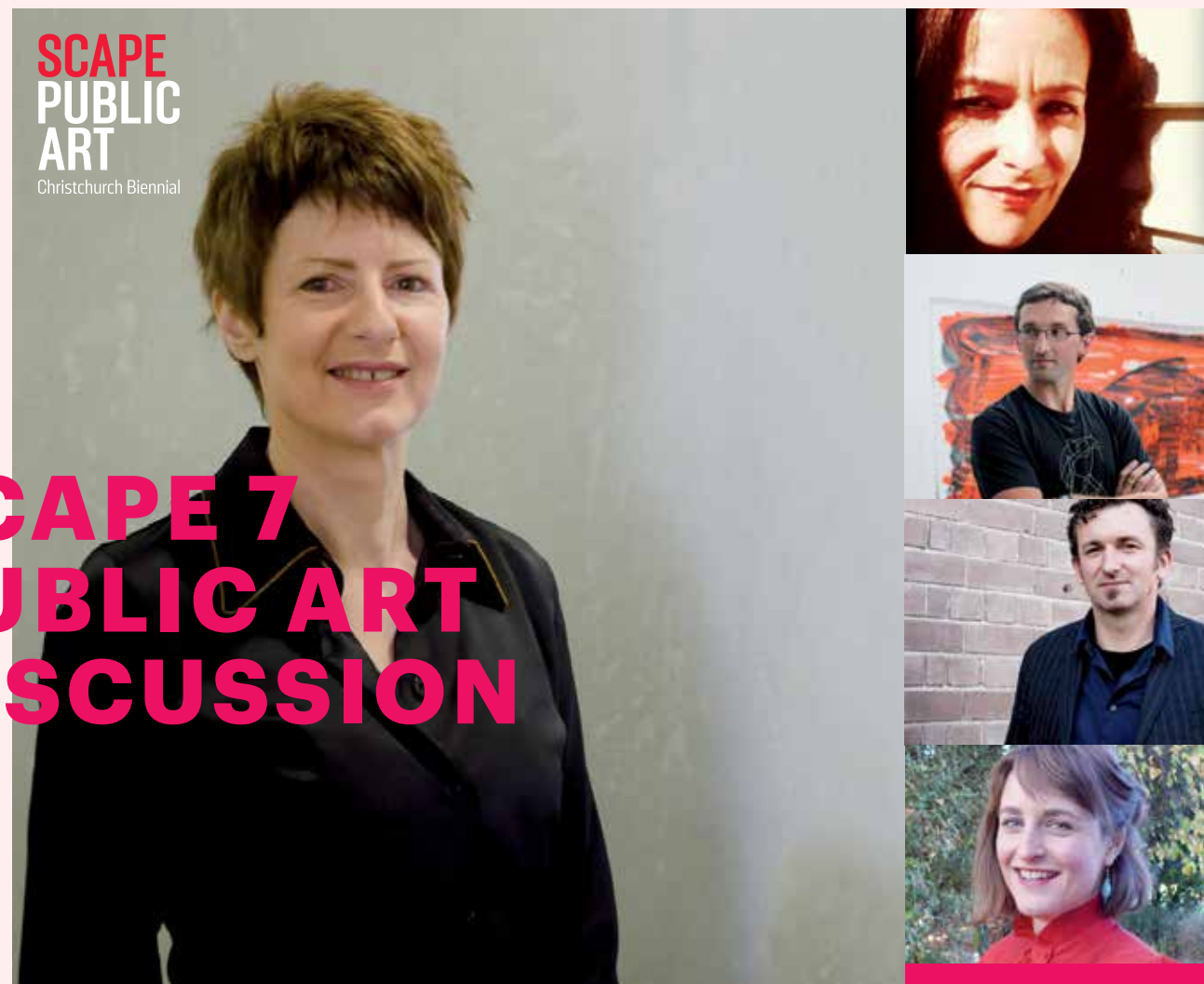
TICKETS:
GENERAL ADMISSION \$10
Service fee applies

DURATION:
1 HR, NO INTERVAL

BOOK:
ARTSFESTIVAL.CO.NZ/IDEAS

Supported by





SCAPE 7 PUBLIC ART DISCUSSION

NEW ZEALAND

The SCAPE 7 Public Art Christchurch Biennial will showcase the work of local, national and international artists from September 27 – November 10.

As an introduction to SCAPE 7, Auckland Art Gallery Principal Curator, Zara Stanhope, will deliver a keynote address entitled 'The Problem of Public Art'. This lecture investigates the potential of, and challenges for, new and traditional forms of public art today.

A panel discussion will follow in the afternoon which looks at 'Objects, Environments, Actions: Public Art in the Transitional City'.

The panel is chaired by Christchurch-based writer, curator and art historian Lara Strongman and includes: Christchurch Art Gallery Senior Curator Justin Paton, Gap Filler founder Coralie Winn, and SCAPE 7 curator (and Sydney's Museum of Contemporary Art Assistant Director-Curatorial & Digital) Blair French.

WHEN:
SAT 21 SEP
KEYNOTE ADDRESS 11AM
PANEL DISCUSSION 1PM

WHERE:
FLETCHER BUILDING
FESTIVAL CLUB

TICKETS:
KEYNOTE ADDRESS 11AM \$5
DISCUSSION PANEL 1PM \$5

DURATION:
KEYNOTE ADDRESS 1 HR 30 MIN
PANEL DISCUSSION 1 HR 15 MINS

BOOK:
ARTSFESTIVAL.CO.NZ/IDEAS

Sponsored by  creative nz
ARTS COUNCIL OF NEW ZEALAND | TOI AOTEAROA



FIND OUT WHERE EVERYBODY'S GOING THIS SEASON...

Christchurch Arts Festival has an exciting programme for primary, intermediate and secondary school students. Engage with theatre, music, opera and visual art in these fantastic opportunities with many activities and events taking place at your school.

SCHOOLS PROGRAMME



Adam Page

This live-looping musical wizard takes his musical magic into schools! Fascinating and fun for children of all ages. See page 36 for details on Adam's evening performance.

Tanya Batt

Tanya tells stories from all around the world! She will visit schools throughout Christchurch to weave her stories for young and old.



Niu Sila

Two of New Zealand's top comedy writers – Oscar Kightley and Dave Armstrong – tackle an oddball friendship spanning 30 years, two cultures, one cricket team and one street.

Funny and poignant, irreverent yet touching, Niu Sila is set in 1970s New Zealand where six-year-old Ioane Tafiola, fresh off the boat from a Pacific Island moves in next door to six-year-old Kiwi kid Peter Burton. They begin an unlikely friendship that will change their lives.

Fly Me Up To Where You Are
see page 2



Ivy

From her hideaway in a museum basement comes Ivy, a cleaning lady with a difference. Her humble set of wheels may look like a cleaning cart, but just wait and see where – and when – that time-travelling trolley is about to take you.

Join our heroine of hygiene as she takes you on a whirlwind trip through history. From a clash with Cleopatra to schmoozing with Shakespeare, and even a detour to the moon – our quirky queen of clean lets nothing distract her from her mission to save the dinosaurs from certain extinction.

With a cinematic score from Gareth Farr, this production from the Capital E National Theatre for Children™ will warm the hearts and spark the imaginations of audiences of all ages."



FOR FURTHER DETAILS ON THE SCHOOLS PROGRAMME VISIT THE SCHOOLS PAGE AT: ARTSFESTIVAL.CO.NZ/NET/SCHOOLS.ASPX

TO BOOK, PLEASE CONTACT
OUR SCHOOLS COORDINATOR AT:
SCHOOLS@ARTSFESTIVAL.CO.NZ

Supported by



BATTERIE100

STRIKE PERCUSSION / NEW ZEALAND

During 2013, 100 selected students from east Christchurch have been working with renowned musicians and music educators Strike Percussion in the first Christchurch Batterie100 project.

A groundbreaking community project that creates massed percussion groups, Batterie100 has previously run in Auckland and Wellington and includes musical training, mentoring and public performances.

Come and hear Christchurch Batterie100 perform with Strike Percussion.

WHEN:
THURS12 SEP, 6PM

WHERE:
CHRISTCHURCH
TRANSITIONAL CATHEDRAL

TICKETS:
ADULT \$10
CHILD \$5
Service fee applies

BOOK:
ARTSFESTIVAL.CO.NZ/BATTERIE100

Sponsored by



NOYE'S FLUDDE

NEW ZEALAND OPERA / NEW ZEALAND

Noye's Fludde (Noah's Flood) sets to music a 15th century play telling the story of Noah being told by God to build an ark and fill the ark with animals.

This one-act opera features soloists, a children's chorus, orchestra, and you – singing along in three hymn-like settings.

Join the celebration of youth, community and opera.

WHEN:
SAT 21 SEP, 5PM

WHERE:
CHRISTCHURCH
TRANSITIONAL CATHEDRAL

TICKETS:
ADULT \$10
CHILD \$5
Service fee applies

DURATION:
1 HR 30 MINS, NO INTERVAL

BOOK:
NZOPERA.COM/TICKETS

NZOPERA



www.britten100.org

WHAT ELSE IS ON?



Jewellery by Warwick Freeman

Renowned New Zealand jewellery maker Warwick Freeman presents a collection of work, both past and present, in his first ever solo exhibition in Christchurch.

WHEN:
WED 21 AUG – THURS 26 SEP:
MON-FRI 10AM-5PM,
SAT 10AM-4PM

WHERE:
THE NATIONAL, NG SPACE,
LEVEL 1/212 MADRAS STREET



Jonathan Smart Gallery Opening Show

To celebrate the opening of new premises in Buchan St, Sydenham, Jonathan Smart Gallery presents “faith in wordless knowledge” - featuring work by Andrew Drummond, Michael Parekowhai, Jude Rae, Miranda Parkes, Nathan Pohio, Marie Le Lievre and Zhonghao Chen.

WHEN:
UNTIL 31 AUG

WHERE:
JONATHAN SMART GALLERY,
52 BUCHAN ST, SYDENHAM



Going Global

The Going Global Music Summit features internal guest speakers and provides industry professionals and music fans the opportunity to interact with like-minded peers.

WHEN:
MON 9 SEP

WHERE:
FLETCHER BUILDING
FESTIVAL CLUB

FOR MORE INFO VISIT:
CHART.ORG.NZ



CBS Music presents Mozart's Requiem

CBS Choir and Orchestra present Mozart's *Requiem*, with Exsultate Jubilate, and Regina Coeli. The famous *Requiem* was popularised by the film *Amadeus*, which depicted the composer creating music for his own death.

WHEN:
SUN 25 AUG, 3PM

WHERE:
ST MARY'S PRO-CATHEDRAL
373 MANCHESTER STREET

TICKETS:
DOOR SALES ONLY \$20 & \$15



A History of Silence: A Memoir. Lloyd Jones

Jones' desire to learn more about his own unspoken history gained momentum as he witnessed, the turmoil of post-earthquake Christchurch. A moving journey of discovery in which present and past merge as he describes his early years and attempts to piece together his mother's difficult past.

WHEN:
WED 11 SEP, 7.30PM

WHERE:
FLETCHER BUILDING
FESTIVAL CLUB

TICKETS:
\$15
Service fee applies

ARTSFESTIVAL.CO.NZ/IDEAS

CHRISTCHURCH ART GALLERY TE PUNA O WAIWHETU

Christchurch Art Gallery is closed, but open...

The building has been closed since the February 2011 earthquake, so Christchurch Art Gallery is bringing art to the city with their Outer Spaces programme. From a glowing billboard, to streetscape sculpture, to vivid murals on huge public walls, discover moments of surprise, humour, colour and wonder in post-quake Christchurch.

FOR MORE INFO VISIT:
CHRISTCHURCHARTGALLERY.ORG.NZ



THE COURT AT THE FESTIVAL

HUI

Estranged for 20 years, four brothers return to the family home to mourn their father Bob. But can time heal old wounds?

Over one heated night this family must confront the past and take responsibility for the present.

By Mitch Tawhi Thomas, directed by Erina Daniels

WHEN:
SAT 31 AUG –
SAT 21 SEP, 8PM
(7PM MON AND THURS)

WHERE:
THE COURT THEATRE

TICKETS:
ADULT \$34 – \$39
SENIOR (65+),
COURT SUPPORTER,
GROUP 10+ \$29 – \$34
UNDER 25 \$22 – \$27
CHILD \$17 – \$22

DURATION:
1 HR 30 MINS,
INCLUDING INTERVAL

BOOK:
COURTTHEATRE.ORG.NZ
(03) 963 0870 OR 0800 333 100



THE GREAT ART WAR

When a wealthy philanthropist gifts Frances Hodgkins' painting 'The Pleasure Garden' to the Christchurch Art Gallery, it ignites a battle between art and politics. Big ideas and great tunes in a brand new musical.

*Script and lyrics by Stuart Hoar,
Music and lyrics by Philip Norman,
Directed by Melanie Camp*

WHEN:
SAT 31 AUG –
SAT 21 SEP, 7.30PM
(6:30PM MON AND THURS)
SAT 31 AUG, 2PM

WHERE:
THE COURT THEATRE

TICKETS:
ADULT \$50 – \$55
SENIOR (65+) \$43 – \$48
COURT SUPPORTER,
GROUP 20+ \$41 – \$46
UNDER 25 \$31 – \$36
CHILD \$21 – \$26

DURATION:
1 HR 50 MINS,
INCLUDING INTERVAL

BOOK:
COURTTHEATRE.ORG.NZ
(03) 963 0870 OR 0800 333 100



ELIJAH

JUBILATE SINGERS / NOTA BENE / CHRISTCHURCH

Elijah is the most popular and dramatic of all Mendelssohn's choral works.

This well-known oratorio is presented by Christchurch's Jubilate Singers, Nota Bene (Wellington), Bel Canto (Burnside High School) and accompanied by the Jubilate Orchestra.

The soloists are Sue Densem (soprano), Leisa Falconer (contralto), Oliver Sewell (tenor) and David Griffiths (bass). The performance is directed by Grant Hutchinson.

WHEN:
SAT 7 SEP, 7.30PM

WHERE:
CHRISTCHURCH
TRANSITIONAL CATHEDRAL

TICKETS:
ADULT \$30
CONCESSION \$25
CHILD FREE ENTRY
Service fee applies

DURATION:
2 HR 30 MINS,
INCLUDING INTERVAL

BOOK:
ARTSFESTIVAL.CO.NZ/ELIJAH



Ko te oraka whānau i te tuatahi
Whānau wellbeing comes first

Artwork by Morgan Hale



Balancing creativity with the fundamental engineering demands for safety, efficiency, durability, and constructability – this is the McConnell Dowell difference. It's about rising to the challenge and creating a lasting legacy for our communities.

www.mcconnelldowell.co.nz

**McCONNELL
DOWELL**
CREATIVE CONSTRUCTION

FESTIVAL PATRONS AND STAFF

CHRISTCHURCH ARTS FESTIVAL TRUSTEES

Roger Bridge
Philip Carter
Neil Cox
Stephanie Grieve
Raf Manji
Clare Murray (co chair)
Humphry Rolleston
Lauren Semple (co chair)

ADVISORS TO THE TRUSTEES

Adrienne, Lady Stewart
Dr. Jane Gregg

STAFF

Philip Tremewan, *Director*
Tiffany Harkess, *General Manager*
Jo Kilgour, *Technical Manager*
Sally Woodfield, *Marketing & Publicity Consultant*
Samantha McConnell, *Marketing & Publicity Coordinator*
Jessica Foote, *Ticketing Manager*
Kirsty Somerville, *Artist Liaison*
Susan Henson, *Friends & Patrons Coordinator*
Fiona Brooker, *Accounts Administrator*
Nikki Wallace-Bell, *Schools Coordinator*
Deane Simmonds, *Projects Coordinator*
Lucy Matthews, *Projects Coordinator*

PLATINUM PATRONS

Philip Carter Family
Ernest and Catherine Henshaw
NZ Tax Refunds
Robert and Philippa Robertson
Adrienne, Lady Stewart
The Robert and Barbara Stewart Charitable Trust

GOLD PATRONS

Jo Appleyard and Robbie Larkin
Aspiring Asset Management Ltd
Roger Bridge
Philip and Ros Burdon
Tom and Victoria Elworthy
Ben and Penny Gough
Antony Holden
Quality Property Management Ltd
Humphry and Debra Rolleston
Laraine and Peter Sharr

PATRONS

Ed and Kim Adelson
Chambers Strategy and Communication
Hall Cannon and Miles Refo
Stephanie Grieve and Bill Willis
Jeremy Johnson
Dr. Gerald Johnstone and Major Brendan Wood
Michael Laney and Monica Ryan
Anthony and Jane Leighs
Bill Luff and Monica Hunter
Justin and Clare Murray
Andrew Ott
Lauren Semple
Alexandra Stewart

LIFE MEMBERS

Barry Gadsby
Robert and Philippa Robertson

FRIENDS AND PATRONS COMMITTEE

Elizabeth Ineson
Lee McVicar (president)
Charlotte Montgomery
Kirsty Rueppell
Rebecca Stewart

FRIENDS AND PATRONS

For details on how to become a Friend or Patron of the Festival, visit artsfestival.co.nz/net/friends.aspx or email friends@artsfestival.co.nz.

Friends and Patrons have access to the new exclusive 'Behind the scenes' programme of unique insights, experiences and performances during the Festival period.

The Christchurch Arts Festival would like to say a special thank you to the Friends and Patrons Committee, a voluntary group dedicated to supporting the Christchurch Arts Festival and our arts community in Canterbury.

Christchurch Arts Festival
PO Box 705
Christchurch 8140
New Zealand
Phone +64 3 365 2223

SCAPE 7

27 SEPTEMBER – 9 NOVEMBER 2013

The SCAPE Public Art Christchurch Biennials are
New Zealand's Premier Public Art Events.

Anton Parsons, *Passing Time*, located
at CPIT. *Passing Time* was commissioned
by the Christchurch City Council and CPIT
and installed for SCAPE 6.

During the SCAPE 7 Public Art Christchurch Biennial, central Christchurch will come
alive with a free public art walkway comprising one new, permanent artwork and
ten temporary works by leading New Zealand and international artists.

A map of the public art walkway, commentary on the artworks and a calendar of
events will be available online from 8 September 2013.

scapepublicart.org.nz

Follow us on Facebook and Twitter for regular updates. [facebook.com/SCAPEPublicArt](https://www.facebook.com/SCAPEPublicArt) · twitter.com/SCAPE_NZ

SCAPE
PUBLIC
ART
Christchurch Biennial

Celebrating
the heart and creativity of
Christchurch



Proud to be a cornerstone partner of Christchurch Arts Festival 2013

BOOKING INFORMATION

PUBLIC SALES OPEN ON 28 JUNE

Tickets for most shows are available
through Dash Tickets, however
shows at the Aurora Centre and
CBS Canterbury Arena are ticketed
through Ticketek. Chamber Music New
Zealand shows at the Transitional
Cathedral are also sold through
Ticketek. Tickets to Christchurch
Symphony Orchestra performances are
available via their website. All tickets
can be easily accessed by visiting
artsfestival.co.nz

Each of the ticketing agencies
listed above will charge their own
transaction fees, you can save money
by booking for multiple shows in one
purchase with the individual agency.
Visit our website to find out which
ticketing agency you will need to visit
to book your chosen shows.

Dash Tickets

www.dashtickets.co.nz
0800 327 484

Dash Tickets are sold through
Christchurch City Council Service
Centres. For a full list of locations
please visit artsfestival.co.nz/outlets

Ticketek

www.ticketek.co.nz
0800 TICKETEK (0800 842 538)

Ticketek NZ is selling tickets for
performances at the Aurora Centre,
CBS Canterbury Arena and all Chamber
Music New Zealand concerts at the
Transitional Cathedral.

Ticketek tickets can be purchased
across the counter from the Information
desk at The Palms Shopping Centre
and Northlands Shopping Centre,
or via the Ticketek Box Office at CBS
Canterbury Arena.

Christchurch Symphony Orchestra

Tickets for Christchurch Symphony
Orchestra's performances *The Rite* and
The Soldier's Tale are available online
tickets.cso.co.nz, by phoning 0800 327
484 or in person at the Christchurch
i-Site Information Centre, Kaiapoi i-Site
Information Centre and the information
desk at Northlands Shopping Centre.

Booking Fee

A booking fee of \$2.50-\$3.50 per
ticket applies to all Christchurch Arts
Festival shows and is in addition to the
advertised ticket price.

FRIENDS

Friends of the Festival membership
entitles you to a preferential booking
period. See page 59 for details of
benefits and becoming a Friend.

DOOR SALES

Door Sales are subject to availability.
Any Door Sales will be available to
purchase at the venue from 60 minutes
prior to the start of the performance.
You may purchase with Cash, EFTPOS,
Visa and MasterCard.

STUDENT PRICES

Where applicable, student prices will be
available to those who are enrolled in
education at tertiary level and below.
Tertiary students and senior secondary
students may be asked to present valid
student ID when purchasing tickets and
on entrance to the show.

DISABLED ACCESS

Information on disabled access
is available on our website
artsfestival.co.nz or when booking
by phone or over the counter.

IMPORTANT INFORMATION

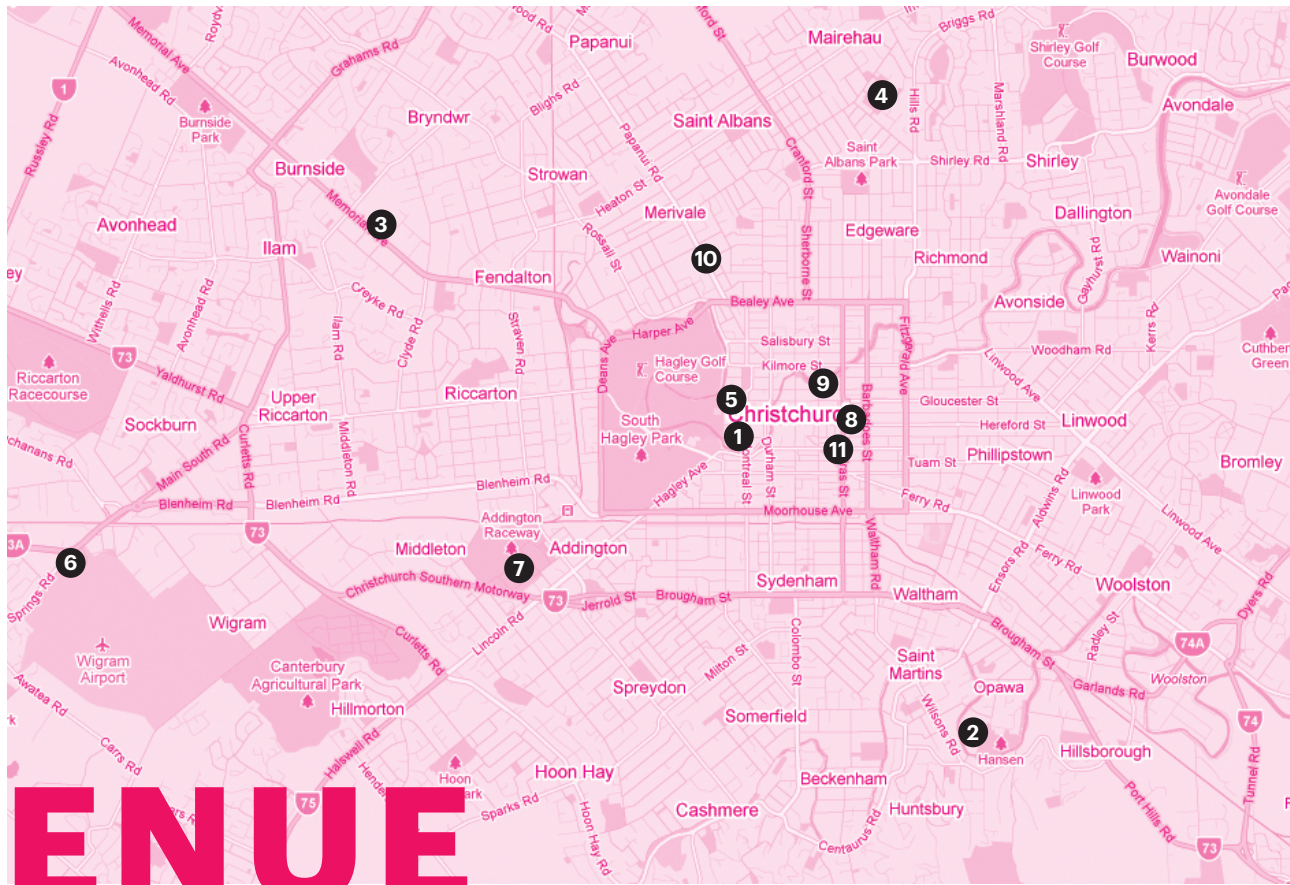
Ticket prices include GST.
General Admission events do not
have allocated seating. Door sales
only as available and we recommend
booking early to avoid disappointment.
The use of mobile telephones or similar
devices is not permitted during the
shows. The use of cameras or other
recording devices is strictly
prohibited. We reserve the right to
admit latecomers at a suitable
point in the performance. If there is no
suitable point, latecomers may not be
permitted entrance.

BOOKING CONDITIONS

The Christchurch Arts Festival
reluctantly reserves the right to change
the schedule by amending dates or
replacing shows or artists. Any changes
will be advertised on the Festival
website and in The Press. There are no
exchanges or refunds on ticket price or
service fees except as required by law
or in the event that a show is cancelled.
Transaction fees are not refundable.
Tickets are non-transferable between
events. No refunds or exchanges on lost
or stolen tickets.

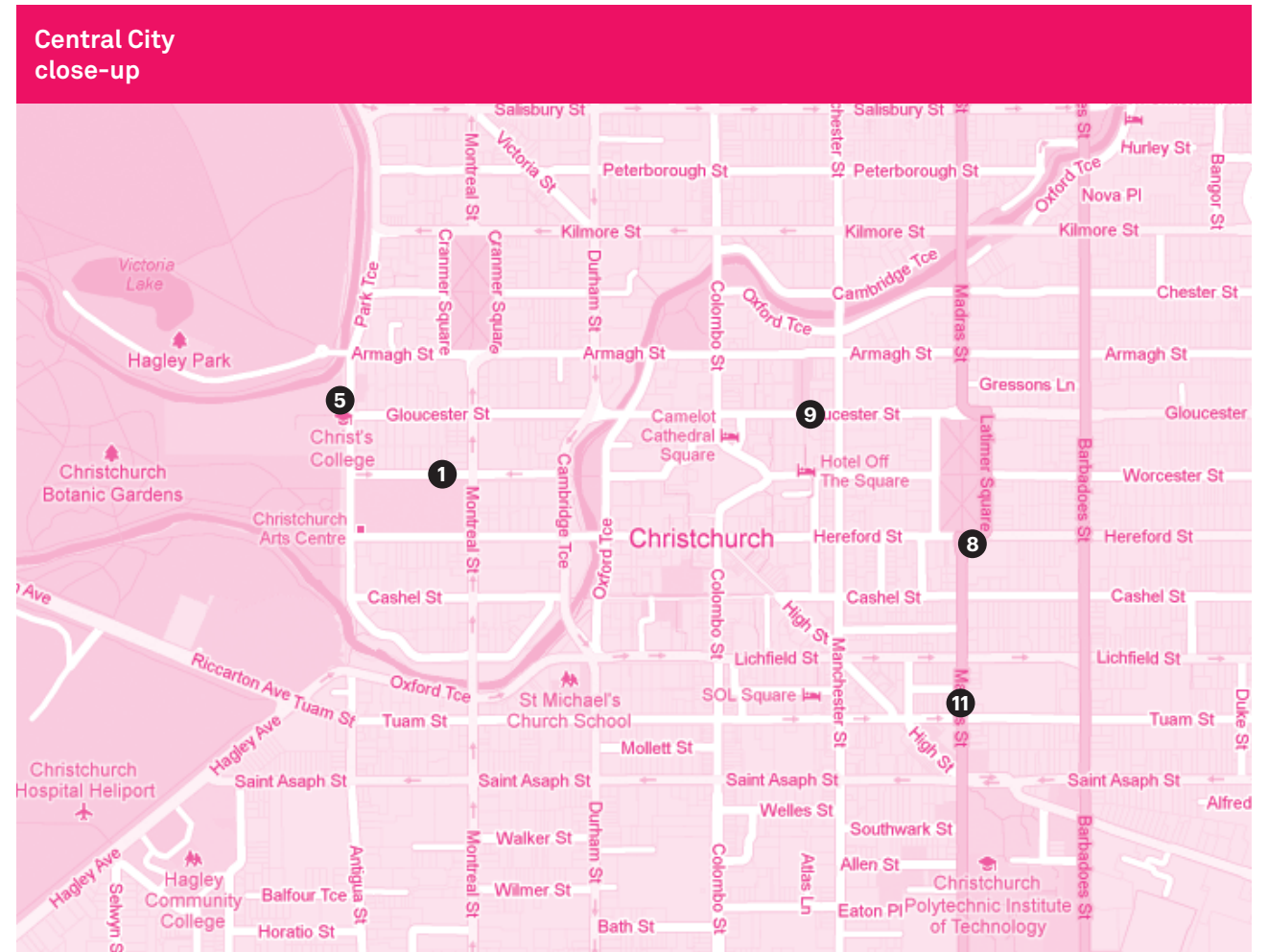
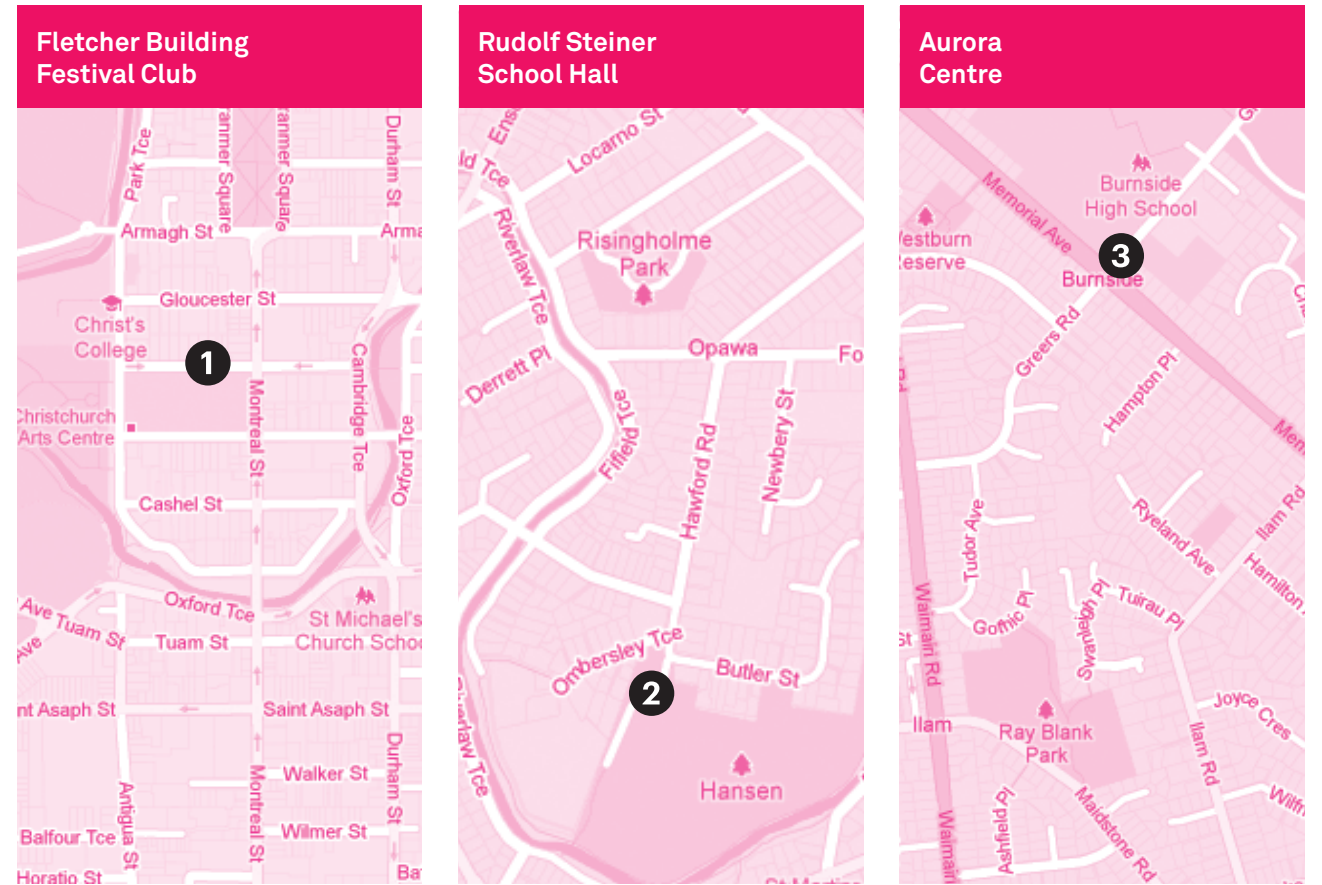
EVENT CANCELLATIONS

In the unlikely event of a show
cancellation, information will be
posted on artsfestival.co.nz



VENUE MAPS

- 1 Fletcher Building Festival Club**
Market Square, The Arts Centre, Off Montreal St and Worcester Blvd, Christchurch CBD
Parking: Street Parking, Arts Centre Car Park
- 2 Rudolf Steiner School Hall**
19 Ombersley Tce, St Martins
Parking: Street Parking, School Car Park
- 3 Aurora Centre**
Corner Memorial Ave and Greers Rd, Burnside
Parking: Street Parking, School Car Park
- 4 Christchurch Football Club**
250 Westminster St, Mairehau
Parking: Street Parking, Car Park
- 5 Old Boy's Theatre, Christ's College**
Rolleston Ave, Christchurch Central
Parking: Street Parking, Arts Centre Car Park
- 6 Wigram Air Force Museum**
45 Harvard Ave, Wigram
Parking: Carpark, Street Parking
- 7 CBS Canterbury Arena**
55 Jack Hinton Dr, Addington
Parking: Car Park
- 8 Christchurch Transitional Cathedral**
Corner Madras and Hereford St
Parking: Street Parking
- 9 Rendezvous Hotel**
166 Gloucester St, Christchurch Central
Parking: Street Parking
- 10 Heartland Cotswold Hotel**
88-96 Papanui Rd, Merivale
Parking: Street Parking
- 11 CBD Bar**
208 Madras St, CBD
Parking: Street Parking, Car Park



The background of the entire advertisement is a photograph of three men in dynamic, athletic poses. They are surrounded by a large, curved, dark pole that arches across the frame. The scene is filled with splatters of black and white paint, creating a sense of movement and artistic expression. The entire image has a strong red color overlay.

**SHOWS EVERY
WEEKEND!
TICKETS FROM \$20
BOOK NOW!**

ARTSFESTIVAL.CO.NZ



Like us on facebook and follow us
on twitter for competitions,
special offers, back stage glimpses
and extra programme content!